

OFFICIAL PRIZE LIST

Will close early if show fills.
Please enter before closing date.

Opening Date: June 19, 2024
Closing Date: July 17, 2024



DRESSAGE, BY CHANCE? SHOW 2

Sunday, July 28, 2024

By Chance Farm, LLC

9205 Bessie Clemson Road, Union Bridge, Maryland 21791

Great American Insurance Group / US Dressage Federation

Regional Championships Qualifier

Colonel Bengt Ljungquist Memorial Championships Qualifier

Participant in the Jockey Club Thoroughbred Incentive Program (TIP)

SHOW 1 AND SHOW 2 ARE SEPARATE SHOWS; EACH SHOW MUST BE ENTERED SEPARATELY.

MOST SHOW COMMUNICATIONS WILL BE EMAILS FROM

ByChanceFarm2002@gmail.com

CHECK YOUR SPAM FOLDER FOR SHOW EMAILS.

Please check the By Chance Farm website,

<http://www.bychancefarm.com/dressage-by-chance/>

for further information and updates.

Show Day: Phone Number: 610-952-1620 Email: ByChanceFarm2002@gmail.com

TABLE OF CONTENTS

TOPIC	PAGE #	TOPIC	PAGE #
1. Summary of Important Show Information	2	23. USEF Information	12
2. Show Officials	3	USEF Motor Vehicle Statement	12
3. Classes	3	USEF Membership Statement	12
4. Definitions	4	USEF Show Rules and Regulations	13
5. Other Fees	5	USEF Safe Sport Reminder	13
6. Musical Freestyle Requirements	5	USEF Sharps Containers Rule	13
7. Entry Procedures & Required Documents	6	USEF Membership Tier Benefits	14
8. General Information	7	USEF Federation Page	15
9. Ribbons and Awards	7	USEF Attention Competitors	16
10. Entry Status and Ride Times Notification	7	24. USDF Information/USDF Recognition Page	17
11. Non-Competing Horses	7	USDF Statement on Animal Welfare	17
12. Bridle Numbers	7	USDF Attention Competitors	18
13. Stabling and Water	7	USDF Attention Freestyle Competitors	18
14. Coggins and Proof of Vaccination	8	GAIG/USDF Regional Dressage Championships	18
15. USEF Headgear Rule (USEF DR120.6)	8	USDF Regional AA Equitation Program	19
16. Rider Attire for the Show	8	USDF Opportunities for Young Horses	20
17. Horse Attire for the Show	8	25. Thoroughbred Incentive Program (TIP)	21
18. Warm-Up and Competition Arenas	8	26. Dressage Competition Entry Form for Late Entries	22
19. Hospitality	8	27. Dressage Competition Entry Form Instructions	23
20. Accommodations	8	28. USEF Release Form	24
21. Directions and Maps	9-10	29. USEF Federation Entry Agreement	25
22. Competition Venue	11	30. By Chance Farm Release	26

MOST SHOW COMMUNICATIONS WILL BE EMAILS FROM
ByChanceFarm2002@gmail.com
CHECK YOUR SPAM FOLDER FOR SHOW EMAILS.

- **ENTRIES VIA FOX VILLAGE ENTRIES REQUIRED:** Entries must be submitted via FOX VILLAGE ENTRIES. Incomplete entries will be charged a \$25 processing fee if not completed by midnight on July 25, 2024. In the event of oversubscription, entries will be first-come-first-served. For details, see section 7 of this document.
 - **CLOSING DATE:** The closing date is midnight, July 17, 2024. The show is limited to two arenas. If the arenas fill before the closing date, the show will close early.
 - **HORSE NAME:** The same horse name must be on the entry, Coggins, proof of vaccination, USEF recording, and USDF registration.
 - **ONLY THREE HORSES (SIX RIDES) PER RIDER:** Since this is a small show with only two arenas, to ensure more riders can ride, a rider may not ride more than three horses and six rides.
 - **SPECIAL SCHEDULING REQUESTS:** All attempts will be made to follow special scheduling requests; however, since this is a small two-ring show, special scheduling is not always possible.
 - **RIDERS DESIRING TO RIDE BEFORE DIFFERENT JUDGES:** To accommodate these riders, the show has classes 148 and 149. Riders must enter BOTH classes. Each class will be before a different judge. These classes are intended for riders attempting to qualify for medals, CBLM and GAIG Championships.
 - **PROOF OF Q FOR MFS CLASSES:** If a rider enters a MFS class, proof of qualification to ride the MFS must be submitted with the entry.
 - **NO STALLS:** Stalls will not be available.
 - **WATER:** Water will be available for people and horses.
 - **CLASS DIVISIONS FOR RESULTS PINNING:** To simplify scheduling and the filling of scratches, all classes will be open classes for all riders. ALL classes will be pinned by divisions as follows:
 - **Open Division:** Professionals and non-USEF members.
 - **AJY Division:** Adult Amateurs (AA) and Junior/Young riders (JYR). If the AJY Division has at least 3 AA and 3 JYR, the AJY Division will be split as follows:
 - **AA Division:** Adult Amateurs.
 - **JYR Division:** Junior/Young Riders.
 - **EMAILS TO SHOW PHOTOGRAPHER:** The show photographer might be given a digital list of show participant names and email addresses. Participants may opt out by emailing the show secretary.
-
- **GAIG** = Great American Insurance Group / US Dressage Federation Regional Championships: See <https://www.usdf.org/competitions/competitions-championships/regionals/competitors.asp> for information.
 - **CBLM** = USDF Region 1 Colonel Bengt Ljungquist Memorial Championships: See <http://www.cblm.org/wp/> for information.
 - Show participants are responsible for understanding the GAIG and CBLM rules and entering classes and tests in accordance with the rules.

2. SHOW OFFICIALS

Show Manager:

Michele Wellman
301-873-3496 (cell)
kyebay@yahoo.com

Show Management:

By Chance Farm, LLC
Michele Wellman, President

Judges:

Sandra Hotz S,CO
Donna Richardson S, CA
Angela Voss R,MD (if needed)

Show Secretary:

Kyle Peiffer
610-952-1620 (cell)
ByChanceFarm2002@gmail.com
(best method)

Medical Services:

On Site
Contact Show Secretary

Technical Delegate:

Robyn Nunnally rTD,VA

Farrier: On Call

Doug Anderson
412-889-2765

Veterinarian: On Call

South Mountain Equine
Justin Sobota, DVM
240-818-5971

3. CLASSES (will be split by PRO/USEF-NM and AJY; AJY will be split to AA and JYR if \geq three rides in both categories)

CLASS #	FEE	DESCRIPTION	
1	\$40	USDF Introductory Level Test A AJY & USEF Non-Members NR	
2	\$40	USDF Introductory Level Test B AJY & USEF Non-Members NR	
3	\$40	USDF Introductory Level Test C AJY & USEF Non-Members NR	
101	\$45	USEF Training Level Test 1 Open	
102	\$45	USEF Training Level Test 2 Open / CBLM Q	
103	\$45	USEF Training Level Test 3 Open / GAIG Q	
111	\$45	USEF First Level Test 1 Open	This show is a qualifier for 2024 GAIG and 2024 CBLM
112	\$45	USEF First Level Test 2 Open / CBLM Q	
113	\$45	USEF First Level Test 3 Open / GAIG Q	
121	\$50	USEF Second Level Test 1 Open	Show entrants are responsible for understanding and adhering to USEF & USDF rules and regulations and GAIG & CBLM rules and entering applicable classes and tests. The show secretary will assist with this endeavor; however, show entrants are the final responsible persons.
122	\$50	USEF Second Level Test 2 Open / CBLM Q	
123	\$50	USEF Second Level Test 3 Open / GAIG Q	
131	\$50	USEF Third Level Test 1 Open	
132	\$50	USEF Third Level Test 2 Open / CBLM Q	
133	\$50	USEF Third Level Test 3 Open / GAIG Q	
141	\$50	USEF Fourth Level Test 1 Open	
142	\$50	USEF Fourth Level Test 2 Open / CBLM Q	
143	\$50	USEF Fourth Level Test 3 Open / GAIG Q	
148	\$50	USEF TOC Open CBLM/GAIG – Only for Class 149 riders (see definitions)	
149	\$50	USEF TOC Open CBLM/GAIG – Only for Class 148 riders (see definitions)	
151	\$60	FEI Prix St. Georges Open / CBLM Q / GAIG Q (see definitions)	
152	\$60	FEI Intermediate TOC Open / CBLM Q / GAIG Q (see definitions)	
153	\$60	FEI Grand Prix TOC Open / CBLM Q / GAIG Q (see definitions)	
154	\$60	FEI TOC Open / CBLM Q / GAIG Q (see definitions)	
160	\$55	USEF TOC Open CBLM/GAIG Open – Only for Class 161 Riders (see definitions)	
161	\$55	USDF Training - Fourth Musical Freestyle TOC Open / CBLM Q / GAIG Q (may be early in the show)	
162	\$60	FEI Musical Freestyle TOC Open / CBLM Q / GAIG Q (may be early in the show) (see definitions)	
171	\$50	USDF Materiale 3-4-5 YO Colts, Stallions & Geldings / USDFBC Q (see definitions)	
172	\$50	USDF Materiale 3-4-5 YO Fillies & Mares / USDFBC Q (see definitions)	
173	\$50	USEF & FEI YH TOC (not qualifying)	
174	\$60	USEF Dev PSG / Dev GP TOC (not qualifying)	
181	\$50	FEI Para-Equestrian TOC 1	
182	\$50	FEI Para-Equestrian TOC 2	

- **GAIG** = Great American Insurance Group / US Dressage Federation Regional Championships: See <https://www.usdf.org/competitions/competitions-championships/regionals/competitors.asp> for information.
- **CBLM** = USDF Region 1 Colonel Bengt Ljungquist Memorial Championships: See <http://www.cblm.org/wp/> for information.
- Show participants are responsible for understanding the GAIG and CBLM rules and entering classes and tests in accordance with the rules.

4. DEFINITIONS

TERM	DESCRIPTION
OPEN	A class that is Open to all riders - professionals, adult amateurs, junior/young riders and USEF non-members may ride.
PRO	Pro fessional. For USEF definition of professional, see USEF rule GR1306.
AA	A dult A mateur. For USEF definition of adult amateur, see USEF rules GR1306 and GR1307.
JYR	J unior and Y oung R iders. For the USEF definition of junior and young riders for dressage, see USEF rule DR119.3.
AJY	A dult Amateur and J unior/ Y oung Riders.
NR	N ot R ecognized. These classes are not recognized by USEF.
CBLM	Qualifying class for CBLM Championships . Qualifying tests are Training 2, First 2, Second 2, Third 2, Fourth 2, Prix St. Georges, Intermediate I, Intermediate II, Grand Prix, and all MFS. To be eligible, riders must be members of a participating organization at the time of the show. No extra fee for CBLM. See www.cblm.org for details.
GAIG	Qualifying class for the Great American/USDF Championships . Qualifying tests are Training 3, First 3, Second 3, Third 3, Fourth 3, Prix St. Georges, Intermediate I, Intermediate II, Grand Prix, First - Fourth MFS, Intermediate I MFS, and Grand Prix MFS. For USDF information see https://www.usdf.org/competitions/competitions-championships/regionals/competitors.asp . Entry fee plus \$15 required before the start of the class.
TOC	T est o f C hoice. Rider may ride any test in the category unless stated otherwise. Specify test on entry form. May be CBLM or GAIG qualifier if proper test is ridden and fees paid before the start of the class. Exception: Classes 148 and 149 (see definition).
CLASSES 148 & 149 USEF TOC	These classes are for USEF Tr, 1 st , 2 nd , 3 rd , or 4 th level tests 1, 2 and 3. Entrants must ride in BOTH Class 148 AND Class 149. The classes provide riders an opportunity to ride two tests before different judges, and to attain a medal, BLM or GAIG-qualifying score at this show. Entrants may ride the same test twice, or any tests from consecutive levels. For GAIG, only one of the scores attained at this show may count as a qualifying score if the same test is ridden: "To qualify for a Regional Championship, horse/rider combinations must earn a total of two qualifying scores (each score must be the average of all judges officiating in a designated Great American/USDF qualifying class), at two different USEF-licensed/USDF Recognized Dressage Competitions, from two different judges, or combination of judges." These classes are also intended to aid in scheduling a small show.
CLASS 152 FEI INTERMEDIATE TOC	For this show, limited to FEI Intermediate I, FEI Intermediate A, FEI Intermediate B, and FEI Intermediate II.
CLASS 153 FEI GRAND PRIX TOC	For this show, limited to FEI Grand Prix and FEI Grand Prix Special.
CLASS 154 FEI TOC	For this show, limited to PSG, FEI Intermediate I, FEI Intermediate A, FEI Intermediate B, FEI Intermediate II, Grand Prix, and Grand Prix Special. Entrants must also be in class 151, 152, or 153.
CLASS 160 USEF TOC	This class is for any USEF Tr, 1 st , 2 nd , 3 rd , or 4 th level test. It is only for entrants in Class 161.
CLASSES 161 & 162 MFS TOC	M usical F reestyle. For information, see USEF rule DR129 Musical Freestyle Ride at https://www.usef.org/forms-pubs/F3p8pgrWgAo/dr-dressage-division and USDF information at https://www.usdf.org/education/other-programs/musical-freestyle/index.asp . Must provide copy of qualifying test. May be CBLM/GAIG qualifier if proper test is ridden and fees paid. For this show, no Pas de Deux or Quadrille classes are offered.
CLASS 162 FEI MFS TOC	For this show, limited to FEI Intermediate I Musical Freestyle, FEI Intermediate A/B musical Freestyle, and FEI Grand Prix Musical Freestyle tests only.
CLASSES 171 & 172 MATERIALE	See the 2024 Procedures to Host USDF DSHB Materiale Class at www.usdf.org .
CLASS 173 USEF & FEI YH TOC	For this show, only for USEF and FEI 4, 5 and 6 year old tests.
CLASS 174 USEF DEV TESTS	For this show, only for USEF Developing PSG and Developing GP tests. Not qualifying.
CLASSES 181 & 182	FEI ParaEquestrian Test of Choice. Does not include Musical Freestyles

5. OTHER FEES

FEE	DESCRIPTION
\$30	Office Fee. Required for every entry, including non-compete horses. NON-REFUNDABLE
FREE	Grounds Fee. Free!
\$23	USEF D&M / Horse Fee. \$15 for drugs & meds, \$8 for USEF. Paid for each horse, not for each entry for the horse.
\$15	GAIG/USDF Qualifying Fee. Additional ride fee. Must be paid <u>before</u> the class starts.
\$35	USDF Non-Member Fee. Required for all riders and owners that are not USDF members. One fee per person per show. People <u>only</u> participating in Introductory Level and Opportunity Classes are exempt.
\$10	Non-Competing Horse. Must also pay \$30 office fee. Horse must wear bridle number when out of the trailer.
\$50	Late Fee. For entries received after the closing date, if approved by the show secretary. Nonrefundable. Submit late fee with the entry.
\$10	Change Fee.
\$30	Returned Check Fee.
\$25	Incomplete Paperwork Fee: Charged for any missing documentation or signatures not received by midnight on 7/25/2024

NOTE 1: USEF People Memberships:

- **Riders and Owners** that are USEF non-members must purchase a USEF Show Pass online for \$45. Only one Show Pass may be purchased per year, after which Rider and Owners must become USEF members. Do USEF membership BEFORE entering the show.
- **Trainers and Coaches** and **Parents/Guardians acting as Trainers/Coaches** must be USEF members. Do USEF membership BEFORE entering the show.

NOTE 2: No stalls will be available.



6. MUSICAL FREESTYLE REQUIREMENTS

- NOTE: For USEF guidelines, see DR129 Musical Freestyle Ride at <https://www.usef.org/forms-pubs/F3p8pgrWgAo/dr-dressage-division> and USDF requirements at <https://www.usdf.org/education/other-programs/musical-freestyle/index.asp>.
- With their entry, **riders must submit a copy of the highest test of the level entered or a higher level with a minimum score of 63% for USEF/USDF tests and 60% for FEI tests**
- Riders must present music on good quality CDs to the show announcer prior to the beginning of the musical freestyle classes. MP3 Files may be emailed to ByChanceFarm2002@gmail.com by 7/24/2024. Please verify receipt of music.
- Times for sound checks will be announced before the show. Please check with the show office.

7. ENTRY PROCEDURES

- **Only entries submitted via FOX VILLAGE Entries will be entered in the show. In the event of show oversubscription, entries will be entered on a first-come-first-served basis.**
- **ENTRY SUBMISSION:**
 - Entrants must submit entries **ONLINE VIA FOX VILLAGE ENTRIES:** See <https://entry.foxvillage.com/>. With this online system, riders and owners agree that they have read the OFFICIAL PRIZE LIST and agree to follow all the class specifications, requirements and conditions therein.
 - Required in Fox Village Entries entry:
 1. **Entry Form:** Completed Entry Form (Fox Village Entries creates this form for you).
 2. **USEF Federation Entry Agreement:** (find link at <https://www.usef.org/compete/resources-forms/competition-management/competition-prize-lists>). One form per entry with a separate signature for rider, owner/agent, trainer, coach (if applicable) and parent (if applicable), even if they are the same people. Must be current form. Enter "USEF Events" on the Competition line.
 3. **USEF Waiver and Release of Liability, Assumption of Risk and indemnity Agreement:** (find link at <https://www.usef.org/compete/resources-forms/competition-management/competition-prize-lists>). Each person ((rider, owner, trainer, coach (if applicable), and parent (if applicable))) must sign a SEPARATE form. Must be current form. Enter "USEF Events" on the USEF Event line.
 4. **Proof of Rider/Owner/Trainer/Coach/Parent/Guardian USEF memberships and Rider/Owner USDF memberships**, unless exempt (use www.EqVerification.org), or purchase USEF Show Pass online (only for Riders and Owners, one Show Pass per year; Trainers, Coaches and Parents must be USEF members) and/or USDF Non-Member Fee (only required for Riders & Owners). Intro and Opportunity only entrants are exempt.
 5. **Proof of Horse USEF Recording** (USEF Lifetime, USEF Annual, USEF HID, or USDF HID) and **USDF Horse Registration** (USDF Lifetime or USDF HID), unless exempt (use www.EqVerification.org). As a minimum, the horse must have a USDF HID.
 6. **Proof of Rider/Owner/Trainer/Coach Safe Sport Training.** Applies to all USEF members age 18 and over that are part of the entry ((rider, owner, trainer, coach (if applicable), and parent or guardian (if applicable))). The proof is on the EqVerification.org report (www.EqVerification.org) and the USEF People Search report (<https://www.usef.org/search/people>). If not on these documents, submit training certificate current within 12 months of the show day.
 7. **Current Coggins** (within 12 months of the show date). Must have horse name the same as on show entry and USEF/USDF recording/registration. The date the blood was DRAWN is the date used.
 8. **Proof of Current Vaccination** IAW USEF GR844. Must have horse name the same as on show entry and USEF/USDF recording/registration.
 9. **Proof of musical freestyle qualification**, if applicable.
 10. **By Chance Farm Release Form.** Must be signed by the Rider/Parent/Guardian and any persons attending the show.
 11. **Payment:** Full payment via Fox Village Entries (online only, no checks).
 - If required documents (2), (3), (4), (5), (6), (7), (8), (9), and/or (10) are not submitted via Fox Village Entries, they may NOT be submitted via FAX or snail mail. They must be submitted as an email attachment sent to ByChanceFarm2002@gmail.com (Please include Name of Entry and Show Date in Subject Line). The full name of the rider must be included so documents can be paired with the entry. No snail-mailed documents.
- **FULL SHOW:** Entries may be limited if numbers exceed capacity of the facility. The **show may fill prior to the closing date**. Entries received after the show is full will be placed on a waiting list and the entrant will be notified.
- **LATE ENTRIES:** Late entries (received by the show secretary after midnight of the closing date) will be accepted on a space available basis if approved by the Show Secretary. Entry must be emailed to the show secretary (no snail-mail) and payment will be as directed by the Show Secretary. Must include the \$50 late fee and \$25 non-Fox Village Entries fee.
- **SHOW AND ENTRY CHANGES:** Show management reserves the right to refuse entries, make changes, deletions, or corrections as deemed necessary.
- **COGGINS:** Negative Coggins valid through the show date is required to enter the show grounds for all horses.
- **PROOF OF VACCINATION:** Documentation valid through the show date is required to enter the show grounds for all horses.
- **CORRESPONDENCE:**
 - All entries correspondence must be via email. No snail-mail, text, telephone or FAX correspondence.
 - Do not send any entry documentation via registered mail, certified mail, or signature required mail.
- **SHOW DAY CHANGES:** Show day changes will incur a \$10 change fee.
- **CHECKS:** Checks are not accepted for show entries. Show day changes, if accepted, may be paid as directed by the Show Secretary.
- **REFUNDS.** Entry scratches received BEFORE midnight of the original published closing date or the actual closing date/time, whichever is earlier, will be refunded less the office fee. Other refunds must be requested before this date. There will be NO REFUNDS, for any reason, AFTER THIS CLOSING DATE, including show cancellation due to Acts of God, acts of terrorism, inclement weather, disease outbreak, and/or other emergencies.

8. GENERAL INFORMATION

- USEF rules are in force from the moment the show management allows access to the show grounds.
- Management reserves the right to split, combine, delete, or add classes dependent on entries. Management also reserves the right to add or substitute judges or make any changes required by circumstances.
- All “no shows” that have not contacted the show office will be considered a scratch for the remainder of the show and time slots may be filled. Riders and owners enter with this understanding and agreement.
- Dogs must be on leashes or crated at all times while on the show grounds.
- Current editions of all tests and score sheets, as posted on the USDF, USEF, and FEI web sites, will be used.
- This is a one-day two-arena show. To ensure participation by many riders and to facilitate show scheduling, **each rider is limited to no more than three horses and six rides.**
- This is a one-day two-ring show that makes special scheduling requests difficult. Therefore, **honoring special scheduling requests will be attempted but cannot be guaranteed.**

9. RIBBONS AND AWARDS

- Ribbons for first through sixth place. Prize for each first place.
- High Score ribbons for each level (Introductory, Training, First, Second, Third, Fourth, PSG, and FEI (Int & GP)).
- High Score ribbons for each division (Professional, Adult Amateur and Junior/Young Rider).
- \$100 Prize Money to the High Score AA – other awards to be announced.
- Thoroughbred Incentive Program (TIP) Awards (see page 18).

10. ENTRY STATUS AND RIDE TIMES NOTIFICATION

- Please ensure you include a valid email address with your Fox Village Entries entry. Check for typos!!!!
- Acknowledgement of entry receipt and its status will be emailed to each entrant using Fox Village Dressage Confirmation. It is the entrant's responsibility to check the entry for errors and completeness.
- Ride times will be posted at least four days before the show on the Fox Village Dressage website (link will be provided when posted) and the By Chance Farm web site at <http://www.bychancefarm.com/dressage-first-chance>. Show participants will be emailed when the ride times are posted.

11. NON-COMPETING HORSES

Non-competing horses must accompany a competing horse at the show. For a non-competing horse, enter the show in the usual manner but do not enter any classes. The only fees are the non-compete horse fee of \$10 and the \$30 office fee. Riders (if applicable), owners and trainers must have USEF / USDF memberships required by the show status of the accompanied competing horse. The USEF D&M horse fee is not paid for non-competing horses, but the horse could be tested.

12. BRIDLE NUMBERS

All horses, including non-competing horses, must wear their bridle number any time they are off the horse trailer.

13. STABLING AND WATER

Stabling will not be available.
Water will be available for horses.

14. COGGINS AND PROOF OF VACCINATION

- **Coggins:** A copy of the horse's negative Coggins report tested within 12 months from the date of the show must be provided. **For this show it must be provided to the secretary before the show.** A horse not in compliance with this rule is not allowed on the show grounds. The horse name on the Coggins must match the horse name on the entry and with USEF & USDF.
- **Vaccination:** IAW USEF GR844, proof of vaccination for Equine Influenza Virus and Equine Herpes Virus within six months of the date of the show must be provided. **For this show it must be provided to the secretary before the show.** A horse not in compliance with this rule is not allowed on the show grounds. If the horse falls under USEF GR845.4., all steps in the paragraph must be complied with and proof provided to the show secretary before and during the show.

15. USEF HEADGEAR RULE (USEF DR120.1.1)

Protective headgear in compliance with the accepted testing standards published on the Federation's website. Protective headgear must carry the applicable quality testing tag and/or label. See GR801. From the time horses are officially admitted to the competition grounds by competition management, anyone mounted on a horse at any time on the competition grounds, including non-competing riders, riders on non-competing horses, mounted participants in exhibition classes, and those competing in all classes and tests, including Para Dressage tests, must wear protective headgear as defined by this rule and otherwise in compliance with GR801. The harness must be secured and properly fitted. Any rider violating this rule at any time must immediately be prohibited from further riding until the headgear is properly in place. Protective headgear may be the same as or a coordinating color with the coat, and may include contrast coloring, accent, and crystal decoration. See DR136 for dress code rules for exhibitions.

16. RIDER ATTIRE FOR THE SHOW

- See **USEF DR120 Dress** for dressage riding attire requirements for a level 2 dressage show.
- **USEF DR120.2:** In locations with high average heat and humidity on the date of a competition, competition management may publish in its prize list that jackets will be waived for the duration of the competition. Alternatively, management may announce prior to or during a competition that competitors may show without jackets when extreme heat and/or humidity is forecasted. This waiver applies to national classes at a USEF licensed-USDF recognized dressage competition.
- **ACCORDINGLY, since this location has a high average heat and humidity on the date of the competition, jackets will be waived for the duration of the competition.**

17. HORSE ATTIRE FOR THE SHOW

- See **DR121 Saddlery and Equipment** for complete requirements.

18. WARM-UP AND COMPETITION ARENAS

Warm-up Arena: One 25m x 58m indoor arena with sand and fiber footing.

Lunging Area: Grass pasture.

Competition Arenas: Two 20m x 60m outdoor arenas with sand footing.

19. HOSPITALITY

Lunch, snacks and beverages will be available for purchase.

20. ACCOMODATIONS

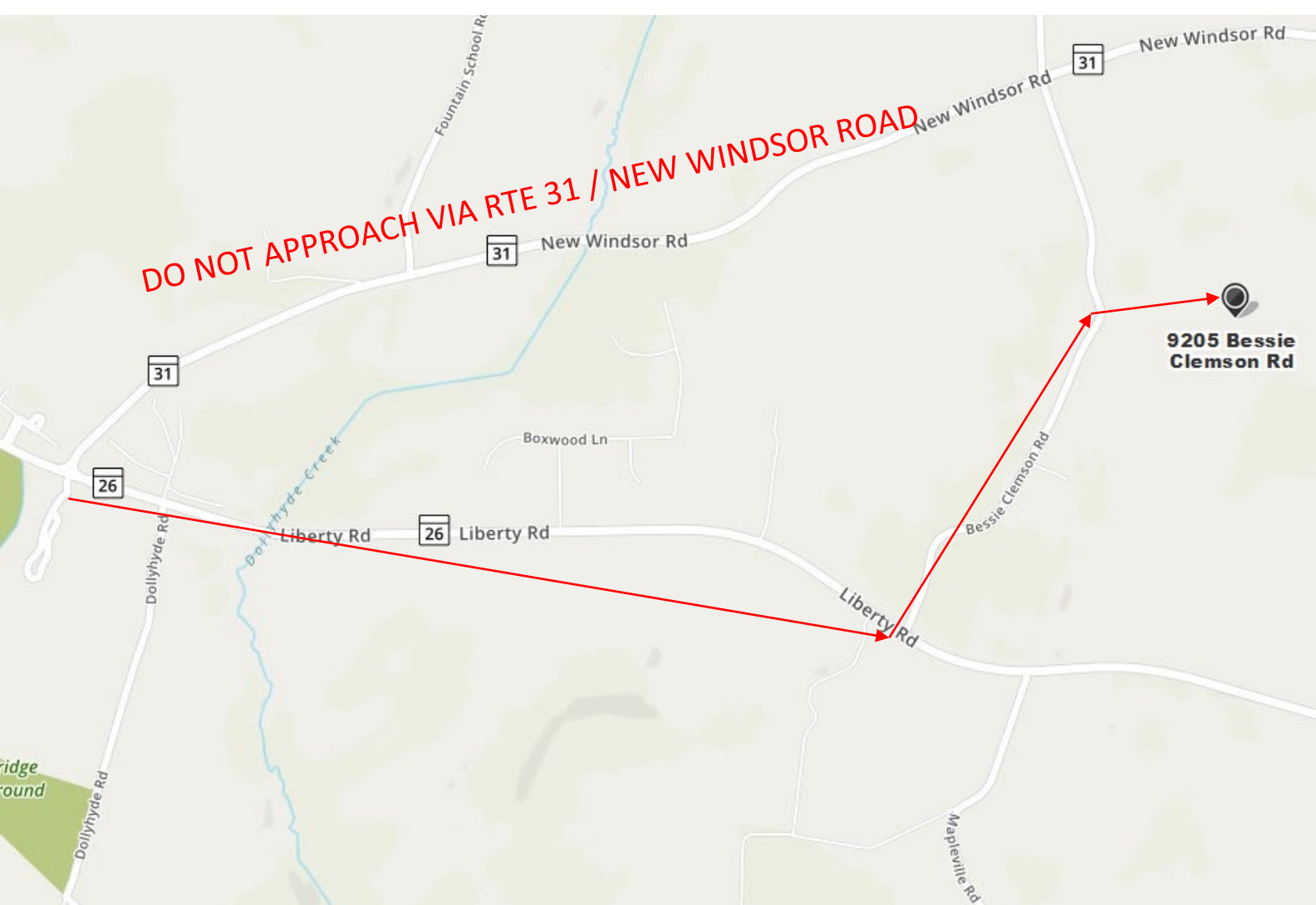
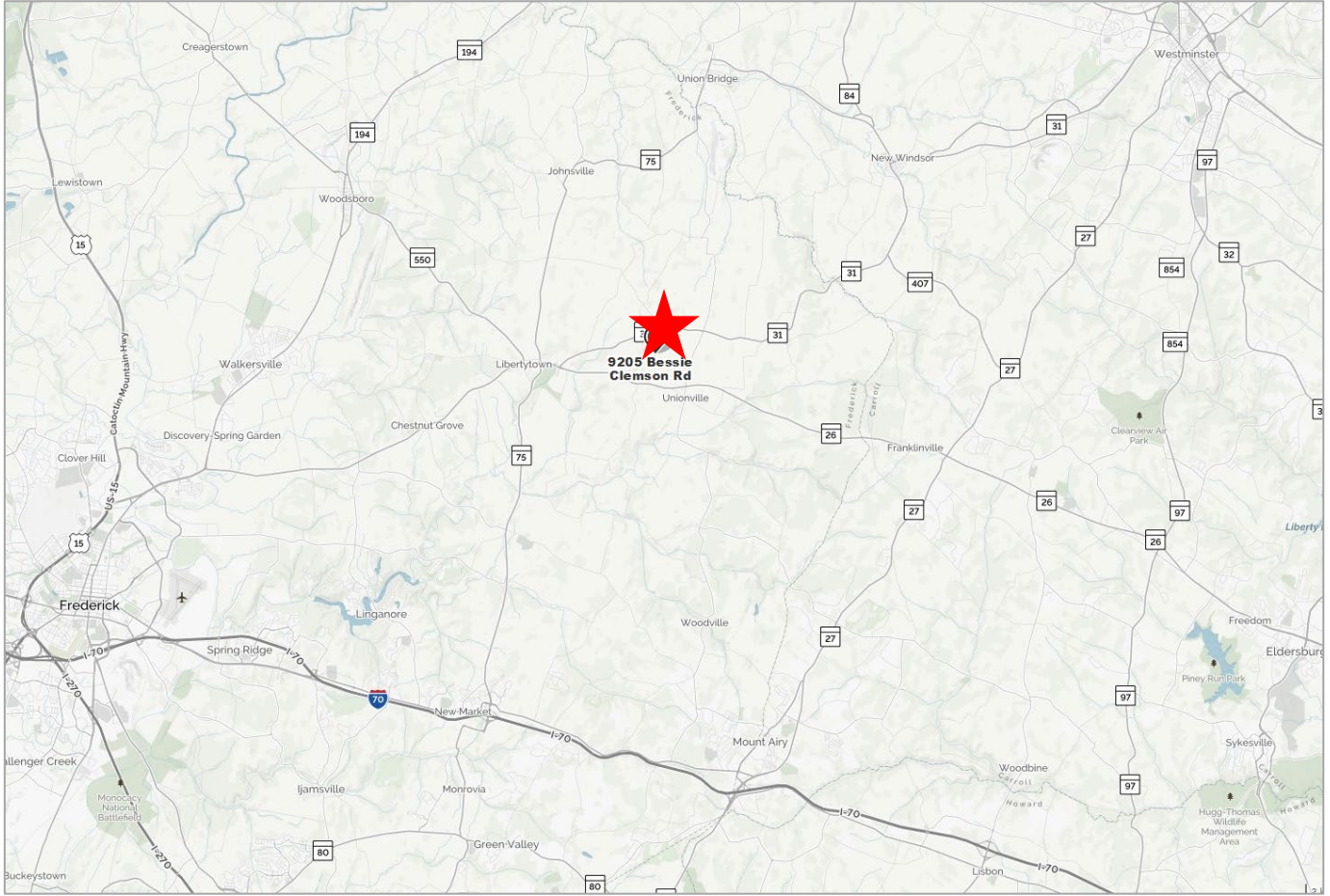
Hampton Inn & Suites, Frederick, MD – 301-696-1565

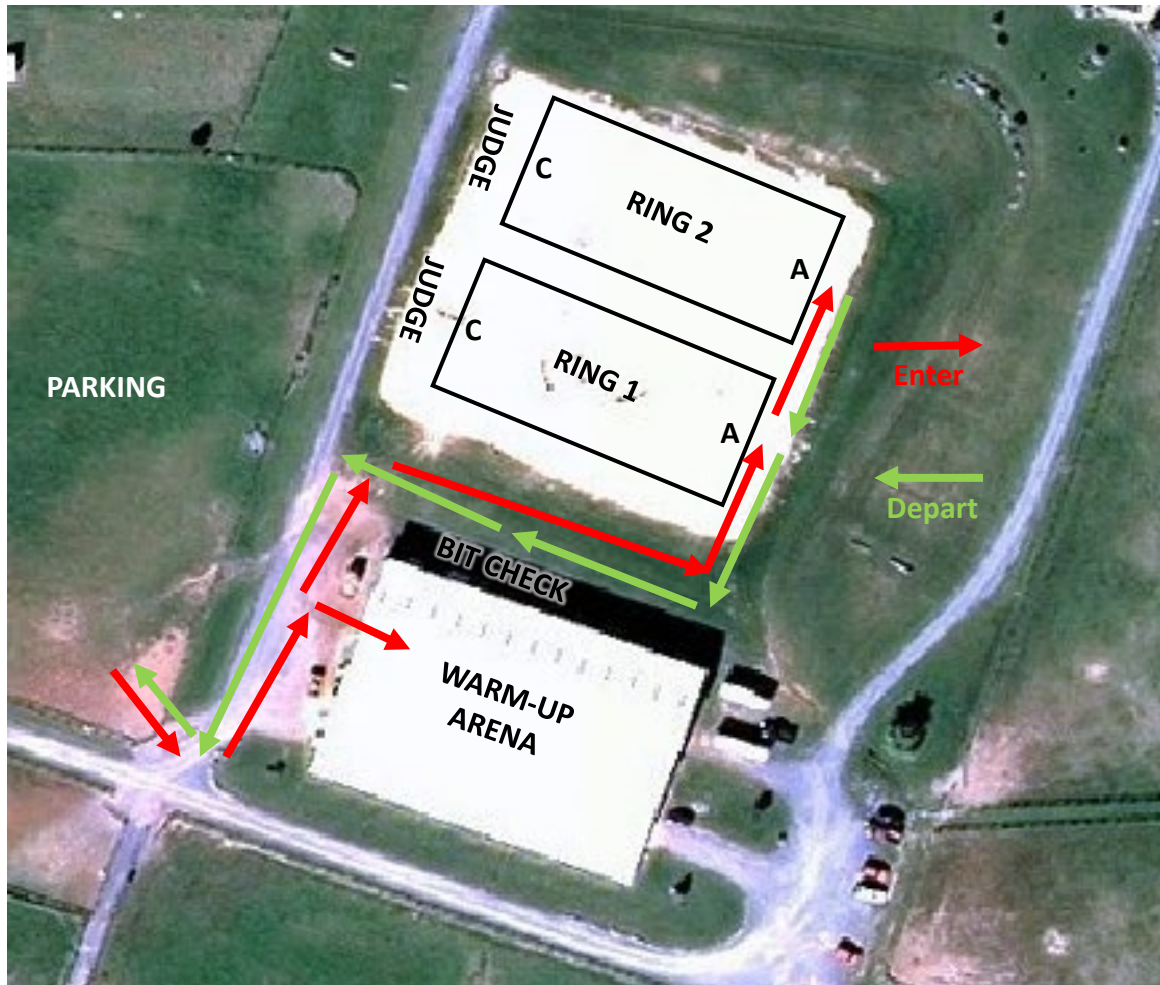
Travelodge, Frederick, MD – 301-663-0500

Days Inn, Frederick, MD – 301-694-6600

21. DIRECTIONS AND MAPS

- [illegible]







- **USEF Rules and Specifications:**

Every class offered herein that is covered by the rules and specifications of the current USEF Rule Book (<https://www.usef.org/compete/resources-forms/rules-regulations/rulebook>) will be conducted and judged in accordance therewith.

- **GR1301 – Motor Vehicle Statement:**

7. Minors who do not have a valid driver's license which allows them to operate a motorized vehicle in the state in which they reside will not be permitted to operate a motorized vehicle of any kind, including, but not limited to, golf carts, motorcycles, scooters, or farm utility vehicles, on the competition grounds of licensed competitions. Minors who have a valid temporary license may operate the above described motorized vehicles as long as they are accompanied by an adult with a valid driver's license. The parent/legal guardian or individual who signs the entry blank as a parent or guardian of a minor operating a motorized vehicle in violation of this rule are solely responsible for any damages, claims, losses or actions resulting from that operation. Violations of this rule will be cause for penalties against those responsible for the child committing the offense. Wheelchairs and other mobility assistance devices for individuals with disabilities are exempt from this rule.
8. The unsafe use of personal electronic transport devices, as determined by the competition officials and management in their sole discretion, that do not require a driver's license to operate, including but not limited to segways, hover boards, and single wheeled scooters is prohibited on competition grounds. Operating such devices in areas where people gather may be deemed "unsafe use" if there is a risk of harm to others. If the operator of the device is a minor, the parent/legal guardian or individual who signs the entry blank as a parent or guardian of a minor operating the device in violation of this rule is accountable and may be subject to penalties. Wheelchairs and other mobility assistance devices for individuals with disabilities are exempt from this rule.

- **USEF Membership Statement:**

Life, senior active and junior active members shall be eligible to participate in all classes at Regular Competitions, Eventing Competitions at the Modified Level or above and Combined Driving Competitions at the Advanced Level, Dressage, Reining and Vaulting Competitions and Endurance Rides. A non-member may participate as a handler, rider, driver, owner, lessee, or agent at Regular Competitions, Eventing Competitions, Dressage Competitions, Reining Competitions and Combined Driving Competitions upon payment of a Show Pass fee. Participants in the following classes are exempted from the Requirements of this rule: 1) leadline; 2) exhibitions; 3) games and races; 4) classes for 4-H members; 5) walk trot and academy classes (academy classes are classes limited to horses used regularly in a lesson program); 6) USDF introductory level tests, pas de deux and quadrille classes; 7) assistant handlers in Dressage Sport Horse Breeding classes

- **USEF Rules and Regulations:**

- **EVERY CLASS OFFERED HEREIN WHICH IS COVERED BY THE RULES AND SPECIFICATIONS OF THE CURRENT USEF RULE BOOK WILL BE CONDUCTED AND JUDGED IN ACCORDANCE THEREWITH.**
- All questions not covered in these rules and regulations shall be decided by the show management whose decision shall be final.
- Every horse entered for competition will comply with the rules of the horse show management, but management will, in no case, be responsible for any loss or damage that may occur, and it shall be condition of entry that each exhibitor shall hold this horse show and the officials and employees of the show blameless for any loss or accident to his/her horse, employees, equipment, which may occur from sickness, fire or otherwise.
- The management reserves the right to refuse, accept conditionally, or to cancel any entries, disqualify any riders or exhibitors, prohibit entries and cancel award prizes without claims for damages; to cancel or combine unfilled classes, or to reschedule classes after due notice to exhibitors; to change rings or rotate judges.
- Exhibitors are notified that any act of discourtesy or disobedience to the judges or officials, on the part of the owner, manager, rider, or groom shall disqualify the horse, and the owner shall forfeit his entry fee and other fees.
- Show management reserves to itself the power to prohibit any person from attending or showing a horse in the ring and to remove any groom or horse from the show without being liable for compensation.
In accordance with the 1989 Federal Waste Tracking Act, which restricts the disposal of medical waste, bio-hazardous medical waste containers will be provided in the stable area. All exhibitors and their agents are responsible for the proper disposal of this waste.
- No person will be allowed in the show ring during the time of judging except the exhibitor and those having official or requested duties to perform.
- It is the tradition of the show that riders be correctly attired for the class in question, that attendants be neatly dressed and the horses properly presented. Management may in its discretion bar any person from entering the ring if not suitable presented to appear before an audience.

- **SafeSport:**

Reminder: All USEF Life and Senior Active members, as well as participants who have regular contact with minor athletes, are required to comply with the U.S. Center for SafeSport training requirement to be eligible to participate in the competition. All participants must adhere to the U.S. Center for SafeSport Code, USEF Safe Sport Policy, and the Minor Athlete Abuse Prevention Policies. More information about these can be found at www.usef.org.

- **USEF Sharps Containers Rule (GR1210.4):**

- Competition management must place a minimum of one (1) sharps container per competition, regardless of whether stabling is provided.
- a. If stabling is provided, for every fifty (50) occupied stalls, one (1) sharps container must be provided for the disposal of needles and other disposable sharp instruments. These containers must be placed in visible, accessible, and convenient locations in barns housing competition horses.
 - b. Sharps Containers: A sharps container is made of puncture-resistant plastic with leak-resistant sides and bottom. It has a tight fitting, puncture resistant lid, which does not allow sharps to come out of the container. Sharps containers must be properly labeled to warn of hazardous waste inside the container. Sharps containers must not be altered in any way from its manufactured form, such as removal of security measures or drilling of the plastic. Sharps containers must be protected from the elements as to not collect rainwater
 - c. It is competition management's responsibility to dispose of contents of sharps containers when the container is three-quarters (3/4) full, in accordance with community guidelines for proper disposal methods. Competition management may fine any individuals including trainers, owners, exhibitors, or their agents up to \$100.00 for improper disposal of needles or other sharp disposable instruments.
 - d. If local law has more stringent requirements than the above, related to sharps containers or disposal, local law will prevail. Competitions that fail to place the required number of containers on the competition grounds or dispose of the contents properly will be considered in violation of the rules and may be subject to penalty as determined by the CEO or their designee and/or the Hearing Committee.

• USEF Membership Tier Benefits



BENEFITS	US EQUESTRIAN MEMBER/ACCOUNT TYPE		
	FAN FREE ACCOUNT	SUBSCRIBER \$25 MEMBER	COMPETING \$80 MEMBERSHIP
FULL SEARCH, RANKINGS, AND RESULTS ACCESS	X	X	X
MEMBERPERKS DISCOUNTS	X	X	X
EQUESTRIAN WEEKLY, LATEST NEWS IN YOUR INBOX	X	X	X
ACCESS TO DIGITAL US EQUESTRIAN MAGAZINE	X	X	X
LEARNING CENTER VIDEO LIBRARY	X	X	X
U.S. CENTER FOR SAFESPORT RESOURCES	X	X	X
USEF NETWORK LIVE CONTENT	X	X	X
USEF NETWORK ON DEMAND CONTENT		X	X
ACCESS TO U.S. CENTER FOR SAFESPORT TRAINING		X	X
INTERSCHOLASTIC ATHLETE PROGRAM		X	X
ABILITY TO PURCHASE EQUISURE INSURANCE		X	X
MENTAL HEALTH FIRST AID		X	X
US EQUESTRIAN MAGAZINE MAILED TO YOUR DOOR		X	X
HEALTH AND INSURANCE BENEFITS		X	X
COMPETE AT HORSE SHOWS			X
EARN POINTS AND AWARDS			X

USEF Competition Name: Dressage, By Chance? 2

USEF#: 334093

Competition Division(s) and Rating(s):

Dressage, Level 2



MAAPP

MINOR ATHLETE ABUSE PREVENTION

LEARN ABOUT MAAP POLICIES



Safe Sport Training



Local Travel



One-On-One Interactions



Social Media & Electronic Communications



Read about these & more at usef.org/MAAPP

REPORT MAAP POLICY VIOLATIONS



usef.org/safe-sport/reporting

859-225-6915 or Text Anonymously 855-682-8733



ATTENTION COMPETITORS

We want to hear from you! Take a minute to share about your competition experience. The best method to ensure your voice is heard is to provide written feedback directly to USEF. Please fill out the Competition and Licensed Official Confidential Evaluation linked below.

Scan the QR code to log into your My USEF account and complete the form.



Questions?
Email reports@usef.org

USDF Membership Benefits: USDF is dedicated to education, the recognition of achievement, and promotion of dressage. For details on member benefits, including educational programs, awards, and other opportunities, refer to the *USDF Member Guide* or the USDF website at www.usdf.org.

This
competition
is recognized
by USDF
for 2024



Membership Requirements for USEF-licensed/USDF-recognized Competitions: Owners and riders, including foreign riders and owners who are not residents of the US, wishing to participate in a USEF-licensed/USDF-recognized competition as a rider or owner/lessee, must have either a USDF Group Membership (GM), Participating Membership (PM), or have a USDF Non-Member (NM) identification number and pay the USDF Non-Member (NM) fee. (Note: USDF Business Members can own horses but cannot compete as riders with their USDF Business Membership.)

Horses competing at USEF-licensed/USDF-recognized competitions must have either a USDF Horse Identification (HID) number or a USDF Lifetime Horse Registration (LHR). Proper credentials or verification certificates must be presented to the competition secretary.

Riders and owners wishing to participate in a USEF-licensed/USDF-recognized competition, and not able to present the competition secretary with verification of a USDF membership or NM identification, and USDF LHR or USDF HID, must complete a USDF Competition Affidavit Form and pay the \$5 affidavit filing fee. A copy of a completed affidavit form from another competition may also be used for verification purposes for up to 60 days. (Exception: Affidavits cannot be used at Great American Insurance Group/USDF Regional Dressage Championships.)

Exceptions:

- Horses competing only in Individual Breed Classes (IBCs) at DSHB competitions, sires and dams of horses in DSHB group classes, where those sires or dams are not actually competing in the same competition, horses competing only in breed restricted dressage or DSHB classes at Regular Competitions (e.g. all Arabian, all Friesian, or all Morgan classes), or in USDF Introductory Level tests, pas de deux or quadrille, are exempt from this requirement. Also exempt are horses ridden in leadline, exhibitions, games and races, classes for 4-H members, walk-trot, academy, and opportunity classes.
- Riders and owners/lessees competing only in classes which are exempt from the USDF HID requirements are also exempt from the USDF NM identification number and NM fee requirements. Also exempt are handlers of horses competing in DSHB In-Hand or Group classes.

Memberships Defined

Participating Membership (PM): A membership issued to an individual directly by USDF. The membership year is December 1 through November 30. PMs are available for 1-year (\$90), 5-years (\$360), or life (\$1,800). A USDF Youth Participating Membership (YPM) is available for individuals who have not reached their 21st birthday by December 1 of the current membership year (\$72). A PM allows the member to compete at USEF-licensed/USDF-recognized competitions and to participate as a rider and/or owner/lessee for all Adequan®/USDF Year-End Awards and the Great American Insurance Group/USDF Regional Dressage Championship program.

Group Membership (GM): A membership issued to an individual by USDF when the member name and dues are submitted to USDF through an affiliate Group Member Organization (GMO). The GM year begins December 1 and ends November 30. A GM allows the member to compete at USEF-licensed/USDF-recognized competitions and participate in the USDF Rider Awards Program and the USDF Regional Schooling Show Awards Program.

Business Membership (BM): A membership that runs December 1 through November 30 and is issued to a business or organization directly by USDF. The USDF BM (\$240) offers a wider variety of advertising benefits. BMs satisfy requirements of horse ownership only.

Non-Member (NM) Identification Number: For each USDF NM owner/lessee and USDF NM rider there will be a USDF NM fee of \$35 per competition that must be collected by the show secretary and submitted to USDF, along with the USDF Report of Fees document and the \$5 affidavit fee and Competition Affidavit Form if the person cannot provide a copy of their USDF NM card. Owners/lessees or riders exempt from the NM number requirements are also exempt from paying the USDF NM fee. If there are multiple owners of a horse and all are NMs, only one of the owners must pay the NM fee. If the horse has at least one owner who is a current USDF PM, GM, or BM there is no NM fee assessed. Competition management will be invoiced for all applicable USDF NM fees not received with the USDF post-competition paperwork, along with a report listing all USDF NMs. Competition management is then required to submit the NM fees within 30 days to the USDF. An individual with a USDF NM identification number is not eligible for any USDF membership benefits. Once a USDF NM number has been assigned, a USDF NM card can be obtained from the USDF website.

Horse Identification (HID) Number: A one-time tracking number for horses (\$35). Scores earned by a horse with an HID number will be recorded but will NOT be counted towards Adequan®/USDF Year-End Awards. A horse with an HID number is not eligible to compete in Great American Insurance Group/USDF Regional qualifying or championship classes. An HID number can be upgraded to a Lifetime Horse Registration (LHR) for a fee of \$80. If a horse has a USDF LHR it does not need an HID number. An HID number is a one-time fee that does not need to be renewed.

Lifetime Horse Registration (LHR): A horse with an LHR (\$115) is eligible for Adequan®/USDF Year-End Awards, and eligible to compete in Great American Insurance Group/USDF Regional qualifying and championship classes, assuming requirements for the owner and rider are met. If a horse has an LHR it does not need an HID number. An LHR does not need to be renewed.

How to Join USDF

Applications for USDF Participating Membership (PM), Business Membership (BM), Horse Identification (HID) number, and Lifetime Horse Registration (LHR) may be found in the following locations:

- On the USDF website: www.usdf.org. You can submit the application online or download the form.
- In the show office at USEF-licensed/USDF-recognized competitions classified by USEF as Dressage Competitions, and Regular Competitions which are open to all breeds.
- By calling or writing the USDF office at (859) 971-2277, 4051 Iron Works Parkway, Lexington, KY 40511

The effective date of membership is the date the form and correct fees are received in the USDF office or, if applying at a competition, the date accepted by the competition secretary, provided the application is signed and dated by the competition secretary, member, and/or horse owner on that same day.

USDF Statement on Animal Welfare

The United States Dressage Federation, Inc. (USDF), a federation of individual members and over 100 independent organizations throughout the United States, supports the concept of ethical treatment of animals.

Dressage is a classical method of training horses, based upon the horse's natural responses, as carried out in a gradual, planned program during which the horse's athletic abilities are improved in a systematic manner. As a result, the horse becomes capable, comfortable, and responsive in partnership with the rider without the use of force. Dressage competition at various levels of achievement is the ultimate test of the training program to determine whether the desired harmony between horse and rider has been achieved.

The rules pertaining to dressage competition prohibit the use of artificial appliances, training aids, and drugs, which would force the horse to submit. Instead, the emphasis is upon training and a cooperative partnership with the rider. Major competitions are carefully monitored to assure that there is no unnecessary force or harshness displayed.

Unlike other horse sports in which horses enter training at a relatively immature state, dressage training is usually not seriously begun until the horse is three or four. The top levels of achievement require five or more years of progressive training and it is not unusual to see horses in international competition in their late teens. This, in itself, places a premium on good care and soundness throughout the horse's life.

While supporting the concept of animal welfare in its broadest form, the United States Dressage Federation, Inc., also recognizes that it is unrealistic to ascribe human emotions and responses to the horse which in its wild state is a creature of flight, living a hard and precarious existence. Under domestication, the horse is assured of ample food, water, and shelter, as well as protection against infectious diseases and damaging parasites, thus leading a longer and healthier life with a high rate of survival.

As an educational organization, USDF has numerous programs, which teach people how to pursue the accepted, humane training methods. A program of certifying instructors also emphasizes protecting the horse's welfare in pursuit of dressage training.

United States Dressage Federation
4051 Iron Works Parkway, Lexington, KY 40511
Phone: 859-971-2277, Fax: 859-971-7722, usdressage@usdf.org, www.usdf.org

ATTENTION COMPETITORS

Each competitor is responsible for supplying management with correct applicable numbers (USDF and USEF) for horse, owner, rider, and trainer, before the day(s) of the competition.

The scores of competitors who fail to supply correct numbers may not be counted toward national awards.

ATTENTION FREESTYLE COMPETITORS



UNITED STATES DRESSAGE FEDERATION™

Freestyle Competitor Reminders

- The format for the music should be listed in the prize list. If not check with competition management.
- Submit your music clearly labeled with your name, horse's name, bridle number, and freestyle level.
- Make sure to bring a backup in the format requested.
- Be present for your sound check.
- Know the rules for the level you are riding. This includes forbidden and allowed movements for your level.

Questions?

Contact: MusicalFreestyle@usdf.org



2024 Great American Insurance Group/USDF Regional Dressage Championships

A single Regional Dressage Championship program organized by the United States Dressage Federation (USDF), and recognized by the United States Equestrian Federation, Inc. (USEF), will be held in each of the nine USDF regions. In addition, Alaska and Hawaii may each hold state championships if an official request from a Group Member Organization (GMO) is received by April 1 of the prior year. The Regional Championship Program Rules can be found on the USDF website at www.usdf.org. Please refer to the 2024 USDF Member Guide for the comprehensive list of rules and requirements for this program.

Membership/Registration Requirements for Qualifying and Championships

All memberships and registrations/recordings must be correct and current at the time qualifying scores are earned and at the time of the championships.

Rider:

- Must have a USDF Participating* Membership (PM).
- Must have a USEF membership (Active or Life).

Horse:

- Must have a USDF Lifetime Horse Registration (LHR).
- Must have a USEF (Annual or Lifetime) Horse Recording.
- USDF horse registration and USEF horse recording must be in the name(s) of the current owner(s) or lessee(s). A horse is not required to have breed registry papers.

Owner:

- Must have a USDF Participating or Business Membership and a USEF membership (Active or Life Membership or Annual or Life Recorded Farm/Business). If the horse has more than one owner, at least one owner must have both active USEF membership and active USDF Participating or Business Membership and must be the owner of record with USEF and USDF. For a business or farm to be the valid owner under this requirement, it must be listed as an owner of the horse with both USEF and USDF.

* PMs are USDF members who join USDF directly. USDF Group Members (GM) are ineligible.

Minimum Qualifying Scores: One set of nationally-standardized qualifying scores has been established for all USEF/USDF Regional Championships, for Training Level through Grand Prix, in three divisions: open, adult amateur and junior/young rider. FEI Junior and FEI Young Rider classes have only one respective division.

The minimum percentages are as follows:

	OPEN	AA	JR/YR
Training Level (Test 3)	68%	63%	63%
First Level (Test 3)	66%	62%	62%
Second Level (Test 3)	64%	61%	61%
Third Level (Test 3)	62%	60%	60%
Fourth Level (Test 3)	62%	60%	60%
FEI Junior (Team Test)	—	—	60%
FEI Young Rider (Team Test)	—	—	60%
Prix St. Georges	62%	60%	60%
Intermediate I	62%	60%	60%
Intermediate II	62%	60%	60%
Grand Prix	60%	60%	60%
FREESTYLE	OPEN/Jr/YR	AA	
First Level	65%	65%	
Second Level	65%	65%	
Third Level	65%	65%	
Fourth Level	65%	65%	
Intermediate I	65%	65%	
Grand Prix	65%	65%	

Rev 2/14/2023

2023 GAIG/USDF Program Rules: [Click here](#)



UNITED STATES DRESSAGE FEDERATION™

Regional Adult Amateur Equitation Program

The USDF Regional Adult Amateur Equitation Program recognizes adult amateurs competing in equitation and promotes correct seat, position, and use of the aids in dressage. An Adult Amateur Equitation Regional Final class presented by Big Dee's Tack and Vet Supply will be held in conjunction with each of the nine USDF Regional Dressage Championship competitions, providing adult amateurs with additional opportunity for recognition. Ribbons awarded through 8th Place and gift certificates awarded to top three riders.

Adult amateurs wishing to qualify to compete in an Adult Amateur Equitation Regional Final may do so by meeting the following requirements.

Qualifying Requirements

To be eligible for the USDF Adult Amateur Equitation Regional Final class, rider must have

- Earned a score of 70% or higher in any dressage seat equitation class (except walk/trot) at a USEF-licensed/USDF-recognized Dressage competition within the qualifying period of the applicable regional championship.
- or
- Qualified to compete in any regional dressage championship class (excluding freestyles).

Membership Requirements

- Rider must have a USDF Participating Membership at the time the qualifying score is earned, and at the time of the Regional Final class.
- Rider must be an adult amateur, in accordance with GR1306 of the USEF rules, and be designated with USEF as an adult amateur when the score is earned, and at the time of the Regional Final class.
- Owner must have a USDF Participating or Business Membership when the qualifying score is earned, and at the time of the Regional Final class.
- Horse must have a USDF Lifetime Horse Registration when the qualifying score is earned, and at the time of the Regional Final class.

The USDF Regional Adult Amateur Equitation Program rules and information can be found on the USDF [website](#).



United States Dressage Federation™

OPPORTUNITIES FOR 3-6 YEAR OLD HORSES COMPETING IN MATERIALE AND/OR USEF/FEI YOUNG HORSE TESTS

	3 YEAR OLD	4 YEAR OLD	5 YEAR OLD	6 YEAR OLD
ADEQUAN®/YEAR-END AWARDS*				
Materiale Horse of the Year Award (min. 3 scores required)	X	X	X	
USEF Four-Year-Old Award (min. 4 scores required)^		X		
FEI Five-Year-Old Award (min. 4 scores required)^			X	
FEI Six-Year-Old Award (min. 4 scores required)^				X
ProElite/BREEDERS CHAMPIONSHIP SERIES**				
Materiale Championships (min. 1 score required of 72% or higher)				
Three-Year-Old Championship	X			
Four-Year-Old Championship		X		
Five-Year-Old Championship			X	

For Adequan®/USDF Year-End Awards - at the time scores are earned

- * Horse must have a USDF Lifetime Horse Registration Number (LHR)
- * Owner must have a USDF Participating (PM) or Business Membership (BM)
- * Rider must have a USDF PM
- * Competition year starts October 1 and ends September 30

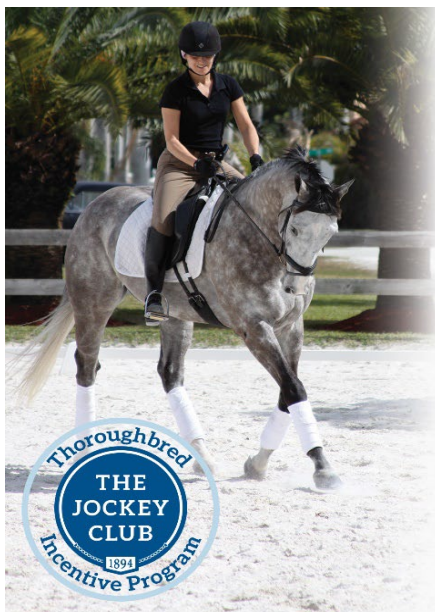
For ProElite/USDF Breeders Championship Series - to compete in the championships

- ** Horse must have a USDF Horse Identification Number or LHR
- ** Owner must have a USDF Group Membership, PM, BM or pay a non-member fee per competition
- ** Rider must have a USDF PM
- ** Competition year starts January 1 and ends September 30

^ Scores earned in the USEF Four- and FEI Five- & Six-Year-Old tests are also eligible to be used towards a USDF Horse Performance Certificate

^^ Horses competing in the ProElite/USDF Breeders Championship Series Final Three- or Four-Year-Old Materiale Championships may also be eligible for the Prospect awards

Complete Award/Championship Requirements Listed in the current *USDF Member Guide*



Ride a Thoroughbred?

Provide T.I.P. Numbers
with your entries.

For more information and
to see if your Thoroughbred is eligible,
visit tjctip.com.

Show us what your Thoroughbred
can do at facebook.com/tjctip

Good luck to the
Thoroughbreds and riders!

To encourage the retraining of Thoroughbreds into other disciplines upon completion of careers in racing or breeding, the Jockey Club Thoroughbred Incentive Program (T.I.P.) is offering sponsorship for Thoroughbred-only classes and divisions and high point Thoroughbred awards. Riders/owners of eligible horses must provide T.I.P. Numbers to the event organizer with the show entry. For more information, visit www.tjctip.com.

Horse Eligibility

- For purposes of eligibility for all T.I.P. classes and awards, a "Thoroughbred" is defined as any horse that has been registered with The Jockey Club or a foreign Thoroughbred stud book recognized by The Jockey Club.
- An unregistered horse is not eligible for T.I.P.
- You must know your horse's registered name to be eligible for T.I.P. (if registered but unnamed, must know YOB and dam's name).
- In order to participate in a T.I.P. class or be eligible for a T.I.P. award, owners and riders must obtain a T.I.P. Number. Please [click here](#) to apply for a T.I.P. Number. The T.I.P. number card should be provided to participating horse shows as proof of eligibility.

Horse ID Assistance: Horse owners who do not have access to a Thoroughbred's Certificate of Foal Registration and who are not able to successfully research a Thoroughbred's tattoo or microchip may apply to The Jockey Club for assistance with identification of the horse as further described below. This should be done well in advance of the horse show. If The Jockey Club is able to identify the horse, a T.I.P. Number letter will be provided for participation in T.I.P. and owners/riders should then apply for a T.I.P. Number.

Awards

The following awards have been approved for this show:

Class/Award
Introductory Level Dressage OTTB High Point Award
Training Level Dressage OTTB High Point Award
First Level Dressage OTTB High Point Award
Second/Third/Fourth Level Dressage OTTB High Point Award
Second Level:
Third Level:
Fourth Level:
FEI Levels Dressage OTTB High Point Award
High Score Dressage OTTB (Overall)

How to Compete for the Awards in this Show

Submit a copy of the TIP card with the entry packet for the show (via Fox Village Entries or via email).

DRESSAGE COMPETITION ENTRY FORM

Only for Late Entries Pre-Approved by the Show Secretary

2024 Dressage, By Chance? 2

Sunday, 28 July 2024

OPEN: June 19, 2024 CLOSE: July 17, 2024

See form instructions on next page.

HORSE NAME (same as Coggins)	BREED	GENDER <input type="checkbox"/> Stal <input type="checkbox"/> Geld <input type="checkbox"/> Mare	HEIGHT (HANDS)	COLOR
COGGINS DATE	SIRE NAME	DAM NAME	DAM SIRE NAME	
BIRTH COUNTRY	YEAR OF BIRTH	BREEDER	HORSE FOR SALE? (in program) <input type="checkbox"/> YES <input type="checkbox"/> NO	

HORSE		RIDER		OWNER		TRAINER* (see below)	
USEF #		USEF #		USEF #		USEF #	
USDF #		USDF #		USDF #			

RIDER			
FIRST NAME		LAST NAME	
STREET ADDRESS			
CITY		STATE	ZIP CODE
CELL PHONE		EMAIL ADDRESS	
CITIZENSHIP		JR/YR BIRTHDAY (MM/DD/YYYY)	
RIDER STATUS (check one)		<input type="checkbox"/> PRO <input type="checkbox"/> AA <input type="checkbox"/> JR/YR <input type="checkbox"/> USEF NM	

OWNER			
FIRST NAME		LAST NAME	
STREET ADDRESS			
CITY		STATE	ZIP CODE
CELL PHONE		EMAIL ADDRESS	
CITIZENSHIP			

TRAINER* (see definition to the right)			
FIRST NAME		LAST NAME	
STREET ADDRESS			
CITY		STATE	ZIP CODE
CELL PHONE		EMAIL ADDRESS	
PHONE DURING SHOW			

CLASSES AND FEES				
CLASS #	CLASS DESCRIPTION	TEST	QUAL Y/N	CL FEE + Q Fee
			Y / N	
			Y / N	
			Y / N	
TOTAL CLASS FEES				

OTHER FEES		FEE
Office Fee - \$30 (No grounds fee!)		\$30
USEF D&M/H Fee (each non-exempt horse) - \$23		\$23
Rider USDF Non-member Fee (if not exempt) - \$35		
Owner USDF Non-member Fee (if not exempt) - \$35		
Non-competing Horse - \$10 (+ Office Fee)		
Late Fee - \$50 (must get approval from show secretary)		\$50
Non-Fox Village Entries Fee - \$25		
Returned Check Fee - \$30		
TOTAL OTHER FEES		
TOTAL FEES DUE		

* USEF GR147 Definition of Trainer:

- Any adult, or adults, who has/have the responsibility for the care, training, custody or performance of a horse [at the show].
- Said person must sign the entry blank of any Licensed Competition whether said person be an owner, rider, agent and/or coach, as well as trainer.
- Where a minor exhibitor has no trainer, a parent or guardian must sign and assume responsibility of trainer.
- The name of the trainer must be designated as such on the entry form.

INTERPRETATION: The trainer is not necessarily the at-home horse trainer. The trainer is the **adult** person who is **responsible for the horse at the show**. It can be the rider, owner, parent, actual trainer, etc. The trainer must be present at the show.

NOTE:

- Riders and Owners** must be USEF members or purchase a USEF Show Pass online (one show pass/year).
- Trainers, Coaches, and Parents/Guardians** acting as Trainer and/or Coach must be USEF members; they cannot purchase a USEF Show Pass.

Only for Late Entries Pre-Approved by the Show Secretary

PLEASE PRINT CLEARLY

COMPLETING THE FORM:

1. **HORSE INFORMATION:** Complete as many of the boxes as possible. If you do not know the information, leave the box blank. Horse Name must be the same name as on Coggins, Proof of Vaccination, USEF Recording, and USDF Registration.
2. **RIDER/OWNER/TRAINER INFORMATION:** Complete all of the boxes.
3. **USEF AND USDF MEMBERSHIP/RECORDING/REGISTRATION NUMBERS AND TYPES:** (include EqVerification.org report) **EXEMPT CLASSES** (for this show, Rider, Owner, Trainer and Horse only participating in Introductory Level Classes): (NOTE: USEF & Drug Fee required for horses in Introductory Level classes.)
 - **HORSE:** USEF Recording and USDF Registration not required but must be entered if the horse is recorded/registered. If the horse is USEF recorded and/or USDF registered, enter the number(s). If not, enter None.
 - **RIDER/OWNER/TRAINER/COACH/PARENT/GUARDIAN:** USEF and USDF memberships not required but numbers must be entered if members. If USEF and/or USDF members, enter the numbers. If not, enter None.
- NON-EXEMPT CLASSES, NO GAIG QUALIFICATION REQUESTED:**
 - **HORSE:** Must have a USDF HID or USDF Lifetime Registration (see <https://www.usdf.org/join/horse-applications/horse-app.asp> to apply online). Enter number(s). If horse only has USDF HID, enter the USDF HID number for both USEF and USDF.
 - **RIDER/OWNER:** RIDER and OWNER must be USEF member(s) or purchase a USEF Show Pass online (one show pass/year). RIDER must be either a USDF Participating Member or USDF Group Member or pay the \$35 USDF Non-Member fee. OWNER must be a USDF Participating Member, USDF Group Member, USDF Business Member or pay the \$35 USDF Non-Member fee. Enter number.
 - **TRAINER/COACH/PARENT/GUARDIAN:** TRAINER, COACH and PARENT/GUARDIAN listed as trainer and/or coach must be USEF members. Enter number or None.
- NON-EXEMPT CLASSES, GAIG QUALIFICATION REQUESTED:**
 - **HORSE:** Must have USEF Annual or Lifetime Recording and USDF Lifetime Registration (not USDF HID). Enter both numbers.
 - **RIDER/OWNER/TRAINER/COACH/PARENT/GUARDIAN:** Must be USEF active member(s). RIDER must be a USDF Participating Member or USDF Lifetime Member. OWNER must have a USDF Participating Membership, USDF Business Membership or USDF Lifetime Membership. TRAINER/COACH/PARENT/GUARDIAN are not required to have a USDF membership. Enter number.
4. **CLASS FEES:** Enter complete Class # (example: 121.2-AJY), Class Description, Test, Qual Y/N, and Total Class Fee (with any Q fee).
5. **OTHER FEES:** Enter other fees for the entry.
6. **TOTAL FEES DUE:** Enter the total of CLASS FEES and OTHER FEES.

ENTRY CHECKLIST - WHAT TO SUBMIT VIA EMAIL FOR PRE-APPROVED LATE ENTRIES:

- ☐ 1. Completed **Entry Form** (previous page)
- ☐ 2. **USEF Federation Entry Agreement** – one form per entry with a separate signature for rider, owner/agent, trainer, coach (if applicable), and parent (if applicable) even if they are the same people. Find the link at <https://www.usef.org/compete/resources-forms/competition-management/competition-prize-lists>
- ☐ 3. **USEF Waiver and Release of Liability, Assumption of Risk and Indemnity Agreement** - each person in the entry (owner, rider, trainer, coach – if applicable, parent – if applicable) must sign a separate form. Find the link at <https://www.usef.org/compete/resources-forms/competition-management/competition-prize-lists>
- ☐ 4. Proof of **Rider/Owner/Trainer/Coach/Parent/Guardian USEF memberships and Rider/Owner USDF memberships**, unless exempt (use www.EqVerification.org)
- ☐ 5. Proof of Rider/Owner/Trainer/Coach **Safe Sport Training**. Applies to USEF members age 18 and over. This information is located on the #4 report.
- ☐ 6. Proof of horse **USEF recording and USDF registration**, unless exempt (use www.EqVerification.org)
- ☐ 7. Copy of current **Coggins** (within 12 months of show date). Must have horse name the same as on show entry and USEF/USDF recording/registration.
- ☐ 8. **Proof of current vaccination** IAW USEF GR844
- ☐ 9. Proof of musical freestyle qualification, if applicable.
- ☐ 10. By Chance Farm Release Form: Rider/Parent/Guardian and any staff attending the show.
- ☐ 11. Full **payment** (Show Secretary will provide information on how to make a late entry payment).

28. USEF RELEASE OF LIABILITY, ASSUMPTION OF RISK INDEMNITY AGREEMENT

See link at <https://www.usef.org/forms-pubs/gCl6eBwQ-1/maryland-state-waiver>



WAIVER AND RELEASE OF LIABILITY, ASSUMPTION OF RISK AND INDEMNITY AGREEMENT

NOTE: Submit ONE FORM for EACH PERSON in the entry (rider, owner, trainer, coach (if applicable) and parent/guardian (if applicable). Rider/trainer may NOT sign for the owner. Ensure the appropriate check box is checked.

For and in consideration of United States Equestrian Federation, Inc. dba US Equestrian ("USEF") allowing me, the undersigned, to participate in any capacity (including as a rider, driver, handler, vaulter, longeur, lessee, owner, agent, coach, official, trainer or volunteer) in a USEF sanctioned, licensed or approved event or activity, including but not limited to equestrian clinics, practices, shows, competitions and related or incidental activities and USEF Event ("USEF Event" or "USEF Events"); I, for myself, and on behalf of my spouse, children, heirs and next of kin, and any legal and personal representatives, executors, administrators, successors, and assigns, hereby agree to and make the following contractual representations pursuant to this Agreement (the "Agreement"):

A. RULES AND REGULATIONS: I hereby agree that I have read, understand, and agree to be bound by all applicable Federation Bylaws, rules, and policies including the USEF Safe Sport Policy and Minor Athlete Abuse Prevention Policies (MAAPP) as published at www.usef.org, as amended from time to time.

B. ACKNOWLEDGMENT OF RISK: I knowingly, willingly, and voluntarily acknowledge the inherent risks associated with the sport of equestrian and know that horseback riding and related equestrian activities are inherently dangerous, and that participation in any USEF Event involves risks and dangers including, without limitation, the potential for serious bodily injury (including broken bones, head or neck injuries), sickness and disease (including communicable diseases), trauma, pain & suffering, permanent disability, paralysis and death; loss of or damage to personal property (including my mount & equipment) arising out of the unpredictable behavior of horses; exposure to extreme conditions and circumstances; accidents involving other participants, event staff, volunteers or spectators; contact or collision with other participants and horses, natural or manmade objects; adverse weather conditions; facilities issues and premises conditions; failure of protective equipment (including helmets); inadequate safety measures; participants of varying skill levels; situations beyond the immediate control of the USEF Event organizers and competition management; and other undefined, not readily foreseeable and presently unknown risks and dangers ("Risks").

EQUINE ACTIVITY LIABILITY ACT WARNING:

CAUTION: HORSEBACK RIDING AND EQUINE ACTIVITIES CAN BE DANGEROUS. RIDE AT YOUR OWN RISK.

Under the laws of most States, an equine activity sponsor or equine professional is not liable for any injury to, or the death of, a participant in equine activities resulting from the inherent risks of equine activities.

C. ASSUMPTION OF RISK: I understand that the aforementioned Risks may be caused in whole or in part or result directly or indirectly from the negligence of my own actions or inactions, the actions or inactions of others participating in the USEF Events, or the negligent acts or omissions of the Released Parties defined below, and I hereby voluntarily and knowingly assume all such Risks and responsibility for any damages, liabilities, losses, or expenses that I incur as a result of my participation in any USEF Events. I also agree to be responsible for any injury or damage caused by me, my horse, my employees or contractors under my direction and control at any USEF Event.

D. WAIVER AND RELEASE OF LIABILITY, HOLD HARMLESS AND INDEMNITY: In conjunction with my participation in any USEF Event, I hereby release, waive and covenant not to sue, and further agree to indemnify, defend and hold harmless the following parties: USEF, USEF Recognized Affiliate Associations, the United States Olympic & Paralympic Committee (USOPC), USEF clubs, members, Event participants (including athletes/riders, coaches, trainers, judges/officials, and other personnel), the Event owner, licensee, and competition managers; the promoters, sponsors, or advertisers of any USEF Event; any charity or other beneficiary which may benefit from the USEF Event; the owners, managers, or lessors of any facilities or premises where a USEF Event may be held; and all directors, officers, employees, agents, contractors, and volunteers of any of the aforementioned parties (**Individually and Collectively, the "Released Parties" or "Event Organizers"**), with respect to any liability, claim(s), demand(s), cause(s) of action, damage(s), loss, or expense (including court costs and reasonable attorney fees) of any kind or nature ("**Liability**") which may arise out of, result from, or relate in any way to my participation in the USEF Events, including claims for Liability caused in whole or in part by the negligent acts or omissions of the Released Parties.

E. COMPLETE AGREEMENT AND SEVERABILITY CLAUSE: This Agreement represents the complete understanding between the parties regarding these issues and no oral representations, statements or inducements have been made apart from this Agreement. If any provision of this Agreement is held to be unlawful, void, or for any reason unenforceable, then that provision shall be deemed severable from this Agreement and shall not affect the validity and enforceability of any remaining provisions.

I HAVE CAREFULLY READ THIS DOCUMENT IN ITS ENTIRETY, UNDERSTAND ALL OF ITS TERMS AND CONDITIONS, AND KNOW IT CONTAINS AN ASSUMPTION OF RISK, RELEASE AND WAIVER FROM LIABILITY, AS WELL AS A HOLD HARMLESS AND INDEMNIFICATION OBLIGATIONS.

By signing below, I (as the participant or as the Parent/Legal Guardian of the minor identified below) hereby accept and agree to the terms and conditions of this Agreement in connection with my (or the minor's) participation in any USEF Event. If, despite this Agreement, I, or anyone on my behalf or the minor's behalf, makes a claim for Liability against any of the Released Parties, I will indemnify, defend and hold harmless each of the Released Parties from any such Liabilities as the result of such claim.

The parties agree that this agreement may be electronically signed. The parties agree that the electronic signatures appearing on this agreement are the same as handwritten signatures for the purposes of validity, enforceability, and admissibility.

☐ RIDER/DRIVER/HANDLER/VAULTER/LONGEUR ☐ OWNER ☐ TRAINER ☐ OFFICIAL ☐ STAFF ☐ VOLUNTEER ☐ COACH (IF APPLICABLE)

Signature: _____ Date: _____ Print Name: _____

Parent/Guardian Signature: (Required if Rider/Driver/Handler/Vaulter/Longeur is a minor) _____ Date: _____

Print Parent//Guardian Name: _____ Emergency Contact Phone No. _____

11.16.23

UNITED STATES EQUESTRIAN FEDERATION : 4001 WING COMMANDER WAY : LEXINGTON, KY 40511 : 859.810.8733 : FAX 859.721.1151 : USEF.ORG

© United States Equestrian Federation® All rights reserved. Reproduction without permission is strictly prohibited.

See link at <https://www.usef.org/compete/resources-forms/competition-management/competition-prize-lists>



FEDERATION ENTRY AGREEMENT

NOTE: Submit ONE FORM for EACH Entry, signed by the rider, owner, trainer, coach (if applicable), and Parent/Guardian (if applicable) in each pertinent section. Use of "same" not accepted. Rider or trainer may sign as agent of the owner.

By entering a Federation-licensed Competition and signing this entry blank as the Owner, Lessee, Trainer, Manager, Agent, Coach, Driver, Rider, Handler, Vaultor or Longeur and on behalf of myself and my principals, representatives, employees and agents, I agree that I am subject to the Bylaws and Rules of the United States Equestrian Federation, Inc. (the "Federation") and the local rules of _____ USEF Event _____ (Competition). I agree to be bound by the Bylaws and Rules of the Federation and of the competition. I will accept as final the decision of the Hearing Committee on any question arising under the Rules, and agree to release and hold harmless the competition, the Federation, their officials, directors and employees for any action taken under the Rules. I represent that I am eligible to enter and/or participate under the Rules, and every horse I am entering is eligible as entered. I also agree that as a condition of and in consideration of acceptance of entry, the Federation and/or the Competition may use or assign photographs, videos, audios, cable - casts, broadcasts, internet, film, new media or other likenesses of me and my horse taken during the course of the competition for the promotion, coverage or benefit of the competition, sport, or the Federation. Those likenesses shall not be used to advertise a product and they may not be used in such a way as to jeopardize amateur status. I hereby expressly and irrevocably waive and release any rights in connection with such use, including any claim to compensation, invasion of privacy, right of publicity, or to misappropriation. The construction and application of Federation rules are governed by the laws of the State of New York, and any action instituted against the Federation must be filed in New York State. See GR908.4.

If not currently a USEF Active Competing member or Subscriber, I acknowledge that I will be enrolled for no cost as a USEF Fan and my USEF Fan Account will continue to annually automatically renew in USEF's sole discretion. Additionally, I acknowledge that the benefits of a USEF Fan are subject to change without notice. USEF may in its sole discretion, at any time, terminate my USEF Fan status.

BY SIGNING BELOW, I AGREE that I have read, understand, and agree to be bound by all applicable Federation Bylaws, rules, and policies including the USEF Safe Sport Policy and Minor Athlete Abuse Prevention Policies (MAAPP) as published at www.usef.org, as amended from time to time, as well as all terms and provisions of this Prize List. If I am signing and submitting this Agreement electronically, I acknowledge that my electronic signature shall have the same validity, force and effect as if I affixed my signature by my own hand.

RIDER/DRIVER/HANDLER/VAULTER/LONGEUR (mandatory)

Signature: _____

Print Name: _____

TRAINER (mandatory)

Signature: _____

Print Name: _____

OWNER/AGENT (mandatory)

Signature: _____

Print Name: _____

COACH (if applicable)

Signature: _____

Print Name: _____

Parent/Guardian Signature: (Required if Rider/Driver/Handler/Vaultor/Longeur is a minor) _____

Print Parent/Guardian Name: _____ Emergency Contact Phone No. _____

Is Rider/Driver/Vaultor a U.S. Citizen: ☐ Yes ☐ No



By Chance Farm LLC
9205 Bessie Clemson Road
Union Bridge, MD 21791

Release and Hold Harmless Agreement

The undersigned and his/her parent or legal guardian, if the undersigned is under eighteen (18) years of age, (Rider/Handler) on behalf of the undersigned, family members, heirs, personal representatives, or assigns, does hereby release By Chance Farm, LLC, a Maryland limited liability company and its members, managers, employees, agents, volunteers, insurers, representatives, heirs, assigns, affiliated persons, or anyone else directly or indirectly connected with By Chance Farm (collectively "By Chance Farm"), from any and all liability while on By Chance Farm property. Such liability shall include, but not be limited to, accident, loss, damage, injury or illness (including communicable diseases) of any kind whatsoever suffered by any of the following: Rider/Handler, Rider/Handler's horse, Rider/Handler's property, invitees, guests, and/or relatives.

Rider/Handler acknowledges that riding, caring for, and being around horses is an inherently dangerous activity. Rider/Handler assumes the risk thereof and assumes full responsibility for all damages resulting, in any way, from such activities. The undersigned acknowledges that By Chance Farm policy requires the use of ASTM/SEI approved headgear while mounted and releases By Chance Farm from any liability associated with damage or injury due to violation of this policy. Rider/Handler is advised to carry his/her own insurance.

Rider/Handler agrees to indemnity and hold harmless By Chance Farm, from any loss, damage, theft, injury, court costs, attorney fees, or any other kind of liability whatsoever related to any loss or damage suffered by Rider/Handler, Rider/Handler's horse, Rider/Handler's property, invitees, guests, and/or relatives while on any By Chance Farm property.

The laws of the State of Maryland shall govern this Agreement. Venue for any claim shall be in Frederick County, Maryland. Any ambiguity whatsoever in this Agreement shall not be held against By Chance Farm.

IN WITNESS WHEREOF, Rider/Handler, and his/her parent or legal guardian, having fully read this agreement, voluntarily and knowingly execute this Release and Hold Harmless Agreement as of the date written below.

Date

**Name and Relationship to By Chance Farm
(employee, boarder)**

Rider/Handler (Signature)

Print Name

Date of Birth

Parent/Guardian (Signature)

Print Name

Date of Birth

Emergency Contact Name & Phone Number

THIS AGREEMENT SHALL BE **ANNUALLY** EXECUTED BY RIDER/HANDLER AND KEPT ON
FILE AT BY CHANCE FARM