

USEF and USDF #339552
A Level 1 Competition

OFFICIAL PRIZE LIST

Will close early if show fills.

Opening Date: March 16, 2022
Closing Date: 10 PM, April 16, 2022



FIRST CHANCE @ DRESSAGE, BY CHANCE?

Wednesday, April 27, 2022

By Chance Farm, LLC

9205 Bessie Clemson Road, Union Bridge, Maryland 21791

2022 CBLM, GAIG/USDF Qualifier

Participant in the Jockey Club Thoroughbred Incentive Program (TIP)

**ONLY COMPLETE ENTRIES SUBMITTED VIA EQUESTRIAN ENTRIES
WILL BE PUT IN THE SHOW**

Please check the By Chance Farm website, <http://www.bychancefarm.com/dressage-first-chance/>, for further information and updates.
Show Day Phone Number: 301-788-0134. Show Day Email: LeslieRaulin@gmail.com

TABLE OF CONTENTS

TOPIC	PAGE #	TOPIC	PAGE #
1. Summary of Important Show Information	2	21. Directions and Maps	10-11
2. Show Officials	3	22. Competition Venue	12
3. Classes	3	23. USEF Information	13
4. Musical Freestyle Requirements	3	USEF Motor Vehicle Statement	13
5. Definitions	4	USEF Membership Statement	13
6. Other Fees	5	USEF Show Rules and Regulations	14
7. Entry Procedures & Required Documents	6-7	USEF Safe Sport Reminder	14
8. General Information	8	USEF Sharps Containers Rule	14
9. Ribbons and Awards	8	USEF Federation Page	15
10. Entry Status and Ride Times Notification	8	24. USDF Information	16
11. Non-Competing Horses	8	USDF Recognition Page	16
12. Bridle Numbers	8	USDF Statement on Animal Welfare	17
13. Stabling and Water	8	USDF Attention Competitors	17
14. Coggins and Proof of Vaccination	9	USDF Attention Freestyle Competitors	17
15. USEF Headgear Rule (USEF DR120.6)	9	GAIG/USDF Regional Dressage Championships	18
16. Rider Attire for the Show	9	25. Thoroughbred Incentive Program (TIP)	19
17. Horse Attire for the Show	9	26. Dressage Competition Entry Form	20
18. Warm-Up and Competition Arenas	9	27. Dressage Competition Entry Form Instructions	21
19. Hospitality	9	28. USEF Release Form	22
20. Accommodations	9	29. USEF Federation Entry Agreement	23

Not sure how to enter a USEF/USDF Show?

Summary instructions (web page): [Click here](#).

Complete instructions (PDF file): [Click here](#).

Not sure how to use Equestrian Entries?

Summary instructions: Coming soon

Complete instructions (PDF file): [Click here](#).

ONLY COMPLETE ENTRIES SUBMITTED VIA EQUESTRIAN ENTRIES **WILL BE PUT IN THE SHOW**

- **COMPLETE ENTRIES VIA EQUESTRIAN ENTRIES REQUIRED**: Entries must be COMPLETE and submitted via EQUESTRIAN ENTRIES. Incomplete entries will NOT be put in the show. In the event of oversubscription, complete entries will be first-come-first-served. For details, see section 7 of this document.
- **CLOSING DATE**: The closing date is **10 PM**, April 16, 2022. The show is limited to two arenas. If the arenas fill before the closing date, the show will close early. Since compete entries are required, the submission of entries before April 16 is recommended so you have time for corrections.
- **HORSE NAME**: The same horse name must be on the entry, Coggins, proof of vaccination, USEF recording, and USDF registration.
- **ONLY THREE HORSES (SIX RIDES) PER RIDER**: Since this is a small show with only two arenas, to ensure more riders can ride, a rider may not ride more than three horses and six rides.
- **SPECIAL SCHEDULING REQUESTS**: All attempts will be made to follow special scheduling requests; however, since this is a small two-ring show, special scheduling is not always possible.
- **RIDERS DESIRING TO RIDE THE SAME USEF TEST TWICE**: To accommodate these riders, the show has classes 148 and 149. Riders must enter BOTH classes with the same test. Each class will be before a different judge.
- **PROOF OF Q FOR MFS CLASSES**: If a rider enters a MFS class, proof of qualification to ride the MFS must be submitted with the entry.
- **NO STALLS**: Stalls will not be available.
- **WATER**: Water will be available for people and horses.
- **CLASS DIVISIONS FOR RESULTS PINNING**: To simplify scheduling and the filling of scratches, all classes will be open classes for all riders. ALL classes will be pinned by divisions as follows:
 - **Open Division**: Professionals and non-USEF members.
 - **AJY Division**: Adult Amateurs (AA) and Junior/Young riders (JYR). If the AJY Division has at least 3 AA and 3 JYR, the AJY Division will be split as follows:
 - **AA Division**: Adult Amateurs.
 - **JYR Division**: Junior/Young Riders.

2. SHOW OFFICIALS

Show Manager:

Michele Wellman
301-873-3496 (cell)
kyebay@yahoo.com

Show Management:

By Chance Farm, LLC
Michele Wellman, President

Judges:

Willette Brown (S,NJ)
Nicky Vogel (R,VA)

Show Secretary:

Leslie Raulin
2027 Gapland Road
Jefferson, MD 21755
301-788-0134 (cell)
LeslieRaulin@gmail.com (best method)

Medical Services:

On Site
Contact Show Secretary

Technical Delegate:

Michelle King (rTD, VA)

Veterinarian: On Call

South Mountain Equine
Justin Sobota, DVM
240-818-5971

Farrier: On Call
Doug Anderson
412-889-2765

3. CLASSES (will be split by PRO and AJY; AJY will be split to AA and JYR if \geq three rides in both categories)

CLASS #	FEE	DESCRIPTION
1	\$40	USDF Introductory Level Test A AJY & USEF Non-Members NR
2	\$40	USDF Introductory Level Test B AJY & USEF Non-Members NR
3	\$40	USDF Introductory Level Test C AJY & USEF Non-Members NR
101	\$45	USEF Training Level Test 1 Open
102	\$45	USEF Training Level Test 2 Open / CBLM Q
103	\$45	USEF Training Level Test 3 Open / GAIG Q
111	\$45	USEF First Level Test 1 Open
112	\$45	USEF First Level Test 2 Open / CBLM Q
113	\$45	USEF First Level Test 3 Open / GAIG Q
121	\$50	USEF Second Level Test 1 Open
122	\$50	USEF Second Level Test 2 Open / CBLM Q
323	\$50	USEF Second Level Test 3 Open / GAIG Q
131	\$50	USEF Third Level Test 1 Open
132	\$50	USEF Third Level Test 2 Open / CBLM Q
133	\$50	USEF Third Level Test 3 Open / GAIG Q
141	\$50	USEF Fourth Level Test 1 Open
142	\$50	USEF Fourth Level Test 2 Open / CBLM Q
143	\$50	USEF Fourth Level Test 3 Open / GAIG Q
148	\$50	USEF TOC Open CBLM/GAIG – Only for Class 149 riders (see definitions)
149	\$50	USEF TOC Open CBLM/GAIG – Only for Class 148 riders (see definitions)
151	\$60	FEI Prix St. Georges Open / CBLM Q / GAIG Q (see definitions)
152	\$60	FEI Intermediate TOC Open / CBLM Q / GAIG Q (see definitions)
153	\$60	FEI Grand Prix TOC Open / CBLM Q / GAIG Q (see definitions)
160	\$55	USEF TOC Open CBLM/GAIG Open – Only for Class 161 Riders (see definitions)
161	\$55	MFS USDF Training - Fourth TOC Open / CBLM Q / GAIG Q (will be early in the show)
162	\$60	MFS FEI Levels TOC Open / CBLM Q / GAIG Q (will be early in the show) (see definitions)
171	\$50	USDF Materiale 3-4-5 YO Colts, Stallions & Geldings / USDFBC Q (see definitions)
172	\$50	USDF Materiale 3-4-5 YO Fillies & Mares / USDFBC Q (see definitions)
173	\$50	USEF & FEI YH TOC (not qualifying)
174	\$60	USEF Dev PSG / Dev GP TOC (not qualifying)

4. MUSICAL FREESTYLE REQUIREMENTS

- NOTE: For USEF guidelines, see DR129 Musical Freestyle Ride at <https://www.usef.org/forms-pubs/F3p8pgrWgAo/dr-dressage-division> and USDF requirements at <http://www.usdf.org/docs/education/other/FSRGD.pdf>. With their entry, riders must submit a copy of the highest test of the level entered or a higher level with a minimum score of 63% for USEF/USDF tests and 60% for FEI tests
- Riders must present music on good quality CDs to the show announcer prior to the beginning of the musical freestyle classes.
- Times for sound checks will be announced before the show. Please check with the show office.

5. DEFINITIONS

TERM	DESCRIPTION
OPEN	A class that is Open to all riders - professionals, adult amateurs, junior/young riders and USEF non-members may ride.
PRO	Pro fessional. For USEF definition of professional, see USEF rule GR1306.
AA	A dult A mtateur. For USEF definition of adult amateur, see USEF rules GR1306 and GR1307.
JYR	J unior and Y oung R iders. For the USEF definition of junior and young riders for dressage, see USEF rule DR119.3.
AJY	A dult Amateur and J unior/ Y oung Riders.
NR	N ot R ecognized. These classes are not recognized by USEF.
CBLM	Qualifying class for 2022 CBLM Championships . Qualifying tests are Training 2, First 2, Second 2, Third 2, Fourth 2, Prix St. Georges, Intermediate I, Intermediate II, Grand Prix, and all MFS. To be eligible, riders must be members of a participating organization at the time of the show. See www.cblm.org for details.
GAIG	Qualifying class for the 2022 GAIG/USDF Championships . Qualifying tests are Training 3, First 3, Second 3, Third 3, Fourth 3, Prix St. Georges, Intermediate I, Intermediate II, Grand Prix, First - Fourth MFS, Intermediate I MFS, and Grand Prix MFS. For 2022 USDF information see https://www.usdf.org/docs/ShowFlash/web/RegionalChamp/RCRules2022.pdf?t=2/9/2022%2010:12:02%20AM . Rider and owner must be USDF participating members and USEF members; trainer must be USEF member or pay the USEF Show Pass fee (USEF non-member fee); horse must be USDF Lifetime Registered and USEF Annual or Lifetime Recorded. Owners may be USDF Business Members. Entry fee plus \$15 required before the start of the class.
TOC	T est of C hoice. Rider may ride any test in the category unless stated otherwise. Specify test on entry form. May be CBLM or GAIG qualifier if proper test is ridden and fees paid before the start of the class. Exception: Classes 148 and 149 (see definition).
CLASSES 148 and 149 - USEF TOC	These classes are for any USEF Tr, 1 st , 2 nd , 3 rd , or 4 th level test. Entrants must ride the SAME TEST in BOTH Class 148 AND Class 149. The classes provide riders a second opportunity to ride the <u>same</u> test a second time before a second judge, and to attain a BLM or GAIG-qualifying score at this show (tests 2 and 3, respectively). For GAIG, only one of the scores attained at this show may count as a qualifying score: "To qualify for a Regional Championship, horse/rider combinations must earn a total of two qualifying scores (each score must be the average of all judges officiating in a designated Great American/USDF qualifying class), at two different USEF-licensed/USDF Recognized Dressage Competitions, from two different judges, or combination of judges."
CLASS 152 - FEI INTERMEDIATE TOC	For this show, limited to FEI Intermediate I, FEI Intermediate A, FEI Intermediate B, and FEI Intermediate II.
CLASS 153 - FEI GRAND PRIX TOC	For this show, limited to FEI Grand Prix and FEI Grand Prix Special.
CLASS 160 - USEF TOC	This class is for any USEF Tr, 1 st , 2 nd , 3 rd , or 4 th level test. It is only for entrants in Class 161.
CLASSES 161 and 162 - MFS	M usical F reestyle. For information, see USEF rule DR129 Musical Freestyle Ride at https://www.usef.org/forms-pubs/F3p8pgrWgAo/dr-dressage-division and USDF information at https://www.usdf.org/education/other-programs/musical-freestyle/index.asp . Must provide copy of qualifying test. May be CBLM/GAIG qualifier if proper test is ridden and fees paid. For this show, no Pas de Deux or Quadrille classes are offered.
CLASS 162 - FEI MFS TOC	For this show, Class 162 FEI MFS TOC is for FEI Intermediate I MFS, FEI Intermediate A/B MFS, and FEI Grand Prix MFS tests only.
CLASSES 171 & 172 - MATERIALE	Horses will be evaluated according to the criteria listed on the USDF Materiale Class Scoresheet. Horses will be evaluated under saddle at the walk, trot and canter in both directions of the arena. No more than six horses will be asked to canter at one time. Four and five-year old horses may be asked to lengthen the stride at the trot and canter. Horses must be at least 36 months of age to participate in Materiale classes. Materiale classes may not be divided to allow one rider to ride more than one horse.
CLASS 173 - USEF & FEI YH TOC	For this show, only for USEF and FEI 4, 5 and 6 year old tests.
CLASS 174 - USEF DEV TESTS	For this show, only for USEF Developing PSG and Developing GP tests. Not qualifying.

6. OTHER FEES

FEE	DESCRIPTION
\$30	Office Fee. Required for every entry, including non-compete horses. (No grounds fee!)
FREE	Grounds Fee. Free!
\$23	USEF D&M / Horse Fee. \$15 for drugs & meds, \$8 for USEF. Paid for each horse, not for each entry for the horse.
\$15	GAIG/USDF Qualifying Fee. Additional ride fee. Must be paid <u>before</u> the class starts.
\$45	USEF Non-Member Fee (Show Pass Fee). Required for all riders, owners and trainers that are not USEF members. One fee per person per show. The parent trainer of a minor (under 18) is exempt. People <u>only</u> participating in Introductory Level and Opportunity Classes are exempt.
\$35	USDF Non-Member Fee. Required for all riders and owners that are not USDF members. One fee per person per show. People <u>only</u> participating in Introductory Level and Opportunity Classes are exempt.
\$10	Non-Competing Horse. Must also pay \$30 office fee. Horse must wear bridle number when out of the trailer or out of the stall.
\$50	Late Fee. For entries received after the closing date, if accepted. Nonrefundable. Submit late fee with the entry.
\$10	Change Fee.
\$30	Returned Check Fee.
\$25	Non-Equestrian Entries Fee. Only for late entries accepted by the show secretary.

NOTE: No stalls will be available.



7. ENTRY PROCEDURES

Not sure how to enter a USEF/USDF Show?

Summary instructions (web page): [Click here.](#)
Complete instructions (PDF file): [Click here.](#)

Not sure how to use Equestrian Entries?

Summary instructions: Coming soon
Complete instructions (PDF file): [Click here.](#)

- **Only complete entries submitted via Equestrian Entries will be entered in the show. In the event of show oversubscription, complete entries will be entered on a first-come-first-served basis.**
- **ENTRY SUBMISSION:**
 - Entrants must submit complete entries **ONLINE VIA EQUESTRIAN ENTRIES**: See www.EquestrianEntries.com. With this online system, riders and owners agree that they have read the OFFICIAL PRIZE LIST and COVID-19 addendum, and agree to follow all the class specifications, requirements and conditions therein.
 - Required in Equestrian Entries entry:
 1. **Entry Form**: Completed Entry Form (EqEntries creates this form for you).
 2. **USEF Federation Entry Agreement**: (<https://www.usef.org/forms-pubs/7M4lexYMhK4/usef-entry-agreement-fillable>). One form per entry with a separate signature for rider, owner/agent, trainer, coach if applicable and parent if applicable, even if they are the same people. Must be current form. Enter "USEF Events" on the Competition line.
 3. **USEF Waiver and Release of Liability, Assumption of Risk and indemnity Agreement**: (<https://www.usef.org/forms-pubs/FDs-pIVXI9U/usef-waiver-release-of-liability>). Each person (rider, owner, trainer, coach if applicable, parent if applicable) must sign a SEPARATE form. Must be current form. Enter "USEF Events" on the USEF Event line.
 4. **Proof of Rider/Owner/Trainer USEF/USDF memberships**, unless exempt (to get the numbers, use www.EqVerification.org), or pay USDF and/or USEF Non-Member Fees. Intro and Opportunity only entrants are exempt.
 5. **Proof of Rider/Owner/Trainer Safe Sport Training**. Applies to all USEF members age 18 and over that are part of the entry (rider, owner, trainer, coach if applicable, parent if applicable). The proof is on the EqVerification.org report (www.EqVerification.org) and the USEF People Search report (<https://www.usef.org/search/people>). If not on these documents, submit training certificate current within 12 months of the show day.
 6. **Proof of Horse USEF recording (USEF Lifetime, Annual, USEF HID, or USDF HID) and USDF registration (USDF Lifetime or USDF HID)**, unless exempt (use www.EqVerification.org). As a minimum, the horse must have a USDF HID.
 7. **Current Coggins** (within 12 months of the show date). Must have horse name the same as on show entry and USEF/USDF recording/registration.
 8. **Proof of Current Vaccination** IAW USEF GR845. Must have horse name the same as on show entry and USEF/USDF recording/registration.
 9. **Proof of MFS qualification**, if applicable.
 10. **Payment**: Full payment via EqEntries (online only, no checks).
 - If required documents (2), (3), (4), (5), (6), (7), (8) and/or (9) are not submitted via EqE, they may **NOT** be submitted via FAX or mail. They must be submitted as an email attachment sent to LeslieRaulin@gmail.com (the email SUBJECT line must be VERY VERY clear that the email is related to the show or it may not be opened). The entry will not be put in the show until all these documents, in a legible format, are received. No snail-mailed documents.
- **FULL SHOW**: Entries may be limited if numbers exceed capacity of the facility. The **show may fill prior to the closing date**. Complete entries received after the show is full will be placed on a waiting list and the entrant will be notified.
- **LATE ENTRIES**: Late entries (received by the show secretary after 10 PM of the closing date) will be accepted on a space available basis if approved by the Show Secretary. Entry must be emailed to the show secretary (no snail-mail) and payment will be as directed by the Show Secretary. Must include the \$50 late fee and \$25 non-Equestrian Entries fee.
- **SHOW AND ENTRY CHANGES**: Show management reserves the right to refuse entries, make changes, deletions, or corrections as deemed necessary.
- **COGGINS**: Negative Coggins valid through the show date is required to enter the show grounds for all horses.
- **PROOF OF VACCINATION**: Documentation valid through the show date is required to enter the show grounds for all horses.
- **CORRESPONDENCE**:
 - All entries correspondence must be via email. No snail-mail, text, telephone or FAX correspondence.
 - Do not send any entry documentation via registered mail, certified mail, or signature required mail.
- **SHOW DAY CHANGES**: Due to COVID, show day changes will be limited to changes that do not require significant human interaction.
- **CHECKS**: Checks are not accepted for show entries. Show day changes, if accepted, may be paid as directed by the Show Secretary.
- **REFUNDS**. Entry scratches received **BEFORE** 10 PM of the original published closing date or the actual closing date/time, whichever is earlier, will be refunded less the office fee. Other refunds must be requested before this date. There will be **NO REFUNDS**, for any reason, **AFTER THIS CLOSING DATE**, including show cancellation due to Acts of God, acts of terrorism, inclement weather, disease outbreak, and/or other emergencies.

REQUIRED ENTRY DOCUMENTS ([click here](#) for instructions)

[illegible]

1. Entry Form – created by EqEntries using data you enter

 **FEDORATION ENTRY AGREEMENT**

By entering a Federation-licensed Competition and signing this entry blank as the Owner, Licensee, Trainer, Manager, Agent, Coach, Owner, Rider, Handler, Vaultor or Lessee or on behalf of myself and/or principals, representatives, employees and agents, I agree that I am subject to the Bylaws and Rules of the United States Equestrian Federation, Inc. ("the Federation") and the local rules of _____ ("Competition"). I agree to be bound by the Bylaws and Rules of the Federation and of the competition. I will accept in full the decision of the Hearing Committee on any question arising under the Rules, and agree to release and hold harmless the competition, the Federation, their officials, directors and employees for any action taken under the Rules. I agree that I am eligible to enter and actively participate under the Rules, and every horse I am entering is eligible as entered. I also agree that as a condition of and in consideration of acceptance of entry, the Federation and/or the Competition may use any photographs, videos, audios, cables, cables, broadcasts, internet, this, new media or other likenesses of me and my horse taken during the course of the competition for the promotion, coverage or benefit of the competition, sport, and the Federation. Those likenesses shall not be used to advertise a product and they may not be used in such a way as to disparage another rider's. I hereby agree and irrevocably waive and release any rights in connection with such use, including any claim to compensation, invasion of privacy, right of publicity or other compensation. The construction and application of Federation rules are governed by the laws of the State of New York, and any action instituted against the Federation must be filed in New York State. See GP09X.4.

BY SIGNING BELOW, I AGREE to be bound by all applicable Federation rules and all terms and provisions of this entry blank and all terms and provisions of this Prize List. I am signing and submitting this Agreement electronically. I acknowledge that my electronic signature shall have the same validity, force and effect as if it was signed by my own hand.

RIDER/DRIVER/HANDLER/VAULTOR/OWNER/COACH (mandatory)	OWNER/AGENT (mandatory)
Signature _____	Signature _____
Print Name _____	Print Name _____
TRAINER (mandatory)	CAREER (if applicable)
Signature _____	Signature _____
Print Name _____	Print Name _____





Parent/Guardian Signature (Required if Rider/Driver/Handler/Vaultor/Lessee is a minor) _____
Print Parent/Guardian Name _____ Emergency Contact Phone No. _____

Is Rider/Driver/Handler a U.S. Citizen: ☐ Yes ☐ No

2. USEF Entry Agreement – signed by all people in the entry.

[illegible]

3. USEF Waiver ... : one form for each person in the entry

 <p>(JSD NOT OUT) HORSE VERIFICATION</p> <p>USDF #: XXXXXXXXXX Horse/HORSE NAME Type: Lib. (or Animal or HED) Effective Date: 11/08/2016 Exp. Date: - Foil Date: 01/01/2004 FEI Status: Not Registered</p>	 <p>(JSD NOT OUT) HORSE VERIFICATION</p> <p>USDF #: XXXXXXXXXX Horse: Horse Name Type: Lib. (or HED) Effective Date: 11/08/2016 Date Printed: 07/04/2020</p> <p>07/04/2020</p>
<p>(JSD NOT OUT) OWNER VERIFICATION</p> <p>USDF #: XXXXXXXXXX Owner: OWNER NAME Type: Active (or Inactive) Effective Date: 12/01/2019 Exp. Date: 11/06/2020 Safe Sport Training: 09/03/2019 - 09/02/2020</p>	<p>(JSD NOT OUT) OWNER VERIFICATION</p> <p>USDF #: XXXXXXXXXX Owner: Owner Name Membership: Group (or Participating or Non-member) E.R. Date: 12/01/2019 Exp. Date: 11/06/2020 Date Printed: 07/04/2020</p>
 <p>(JSD NOT OUT) RIDER VERIFICATION</p> <p>USDF #: XXXXXXXXXX Rider: OWNER NAME Membership: Active Annulor (or Inactive) Effective Date: 12/01/2019 Exp. Date: 11/06/2020 Safe Sport Training: 09/03/2019 - 09/02/2020</p>	 <p>(JSD NOT OUT) RIDER VERIFICATION</p> <p>USDF #: XXXXXXXXXX Rider: Owner Name Membership: Group (or Participating or Non-member) Effective Date: 12/01/2019 Exp. Date: 11/06/2020 Date Printed: 07/04/2020</p>

4. Proof of people USEF/USDF memberships.
5. Proof of horse USEF/USDF memberships.

The image shows a stack of four membership cards for the USA Triathlon organization. The cards are blue and white, with the USA Triathlon logo prominently displayed. The cards are for different membership levels: COACH, USEF - Active Amateur, TRAINER, and OWNER. Each card features a barcode area and a date range for the membership.

COACH
USEF - Active Amateur (12/01/2019 - 11/30/2020)
Safe Sport Training (9/30/2019 - 9/20/2020)
Over 10 yrs old

TRAINER
USEF - Active Amateur (12/01/2019 - 11/30/2020)
Safe Sport Training (9/30/2019 - 9/20/2020)
Over 10 yrs old

OWNER
USEF - Active Amateur (12/01/2019 - 11/30/2020)
Safe Sport Training (9/30/2019 - 9/20/2020)
Over 10 yrs old

RIDER
USEF - Active Amateur (12/01/2019 - 11/30/2020)
Safe Sport Training (9/30/2019 - 9/20/2020)
Over 10 yrs old

We do not accept the sale of a single item or a group of items without a digital transaction at a USA Triathlon store, website, mobile app, kiosk, point of sale or through a USA Triathlon representative.
(©2019 USA Triathlon. Please accept this is accurate as of 10/16/19 and is not of endorsement.)

6. Proof of people Safe Sport Training

[illegible]

7. Current Coggins w/in 12 months

[illegible]

8. Proof of Current Vaccination IAW USEF GR845 w/in 6 months

<h1 style="margin: 0;">United States Equestrian Federation, Inc.</h1> <h2 style="margin: 0;">2019 USEF FIRST LEVEL TEST 3</h2>	
Name of Competition	
Date of Competition	
Name and Number of Horse	
Name of Rider	
<h3 style="margin: 0;">Final Score</h3> <p style="margin: 0;">Maximum Pts: 360</p>	
Points	Percent
Name of Judge	
Signature of Judge	

9. Other documents, such as proof of MFS qualification.

The image displays four logos stacked vertically. From top to bottom: the PayPal logo (a blue 'P' with a light blue checkmark-like shape inside, above the word 'PayPal' in blue), the Visa logo (the word 'VISA' in white serif font on a blue background with a yellow bar below), the MasterCard logo (two overlapping circles, red on the left and yellow on the right, with the word 'MasterCard' in white), and the Discover logo (the word 'DISCOVER' in black sans-serif font with an orange circle between the 'O' and 'V', above an orange swoosh).

10. Online Payment via Equestrian Entries

8. GENERAL INFORMATION

- USEF rules are in force from the moment the show management allows access to the show grounds.
- Management reserves the right to split, combine, delete, or add classes dependent on entries. Management also reserves the right to add or substitute judges or make any changes required by circumstances.
- All “no shows” that have not contacted the show office will be considered a scratch for the remainder of the show and time slots may be filled. Riders and owners enter with this understanding and agreement.
- Dogs must be on leashes or crated at all times while on the show grounds.
- Current editions of all tests and score sheets, as posted on the USDF, USEF, and FEI web sites, will be used.
- This is a one-day two-arena show. To ensure participation by many riders and to facilitate show scheduling, **each rider is limited to no more than three horses and six rides.**
- This is a one-day two-ring show that makes special scheduling requests difficult. Therefore, **honoring special scheduling requests will be attempted but cannot be guaranteed.**

9. RIBBONS AND AWARDS

- Ribbons for first through sixth place. Prize for each first place.
- High Score ribbons for each level (Introductory, Training, First, Second, Third, Fourth, PSG, and FEI (Int & GP).
- High Score ribbons for each division (Professional, Adult Amateur and Junior/Young Rider).
- Thoroughbred Incentive Program (TIP) Awards (see page 18).

10. ENTRY STATUS AND RIDE TIMES NOTIFICATION

- Please ensure you include a valid email address with your Equestrian Entries entry. Check for typos!!!!
- Acknowledgement of entry receipt and its status will be emailed to each entrant:
 - If the entry is incomplete, an email from the show secretary will be sent detailing the deficiencies, which must be corrected before the entry is put in the show.
 - If/when the entry is complete and is entered in the show, an email will be sent with the subject **FVD Confirmation Mail**. **When this email is received, the entrant is responsible for finding errors and notifying the Show Secretary immediately.**
- Ride times will be posted at least four days before the show on the Fox Village Dressage website (link will be provided when posted) and the By Chance Farm web site at <http://www.bychancefarm.com/dressage-first-chance>. Show participants will be emailed when the ride times are posted.

11. NON-COMPETING HORSES

Non-competing horses must accompany a competing horse at the show. For a non-competing horse, enter the show in the usual manner but do not enter any classes. The only fees are the non-compete horse fee of \$10 and the \$30 office fee. Riders (if applicable), owners and trainers must have USEF / USDF memberships required by the show status of the accompanied competing horse. The USEF D&M horse fee is not paid for non-competing horses, but the horse could be tested.

12. BRIDLE NUMBERS

All horses, including non-competing horses, must wear their bridle number any time they are off the horse trailer.

13. STABLING AND WATER

Stabling will not be available.
Water will be available for horses.

14. COGGINS AND PROOF OF VACCINATION

- **Coggins:** A copy of the horse's negative Coggins report tested within 12 months from the date of the show must be provided. **For this show it must be provided to the secretary before the show.** A horse not in compliance with this rule is not allowed on the show grounds. The horse name on the Coggins must match the horse name on the entry and with USEF & USDF.
- **Vaccination:** IAW USEF GR845 (<https://www.usef.org/forms-pubs/ANcxoLX1gNs/rule-gr845-equine-vaccination>), proof of vaccination for Equine Influenza Virus and Equine Herpes Virus within six months of the date of the show must be provided. **For this show it must be provided to the secretary before the show.** A horse not in compliance with this rule is not allowed on the show grounds. If the horse falls under USEF GR845.4., all steps in the paragraph must be complied with and proof provided to the show secretary before and during the show.

15. USEF HEADGEAR RULE (USEF DR120.1.1)

Protective headgear is defined as a riding helmet, which meets or exceeds current ASTM (American Society for Testing and Materials)/SEI (Safety Equipment Institute) standards for equestrian use and carries the SEI tag. From the time horses are officially admitted to the competition grounds by competition management, anyone mounted on a horse at any time on the competition grounds, including non-competing riders, riders on non-competing horses, mounted participants in exhibition classes, and those competing in all classes and tests, including Para Dressage tests, must wear protective headgear as defined by this rule and otherwise in compliance with GR801. The harness must be secured and properly fitted. Any rider violating this rule at any time must immediately be prohibited from further riding until the headgear is properly in place.

16. RIDER ATTIRE FOR THE SHOW

- See **USEF DR120 Dress** for dressage riding attire requirements for a level 1 dressage show. **The rule changed for 2022; therefore, It is advised you read this rule.**
- **USEF DR120.2:** In locations with high average heat and humidity on the date of a competition, competition management may publish in its prize list that jackets will be waived for the duration of the competition. Alternatively, management may announce prior to or during a competition that competitors may show without jackets when extreme heat and/or humidity is forecasted. This waiver applies to national classes at a USEF licensed-USDF recognized dressage competition.
- **ACCORDINGLY, since April weather is unpredictable, the decision on jackets will be announced on the day of the show.**

17. HORSE ATTIRE FOR THE SHOW

- See **DR121 Saddlery and Equipment** for complete requirements. **The rule changed for 2022; therefore, it is advised you read this rule.**
- See **GR1306 SUBCHAPTER 13-B AMATEURS AND PROFESSIONALS** for rules regarding saddle pad logos, etc. permitted for amateurs. **The rule changed for 2022; therefore, it is advised you read this rule.**

18. WARM-UP AND COMPETITION ARENAS

Warm-up Arena: One 25m x 58m indoor arena with sand and fiber footing.

Lunging Area: Grass pasture.

Competition Arenas: Two 20m x 60m outdoor arenas with sand footing.

19. HOSPITALITY

Lunch, snacks and beverages will be available for purchase.

20. ACCOMODATIONS

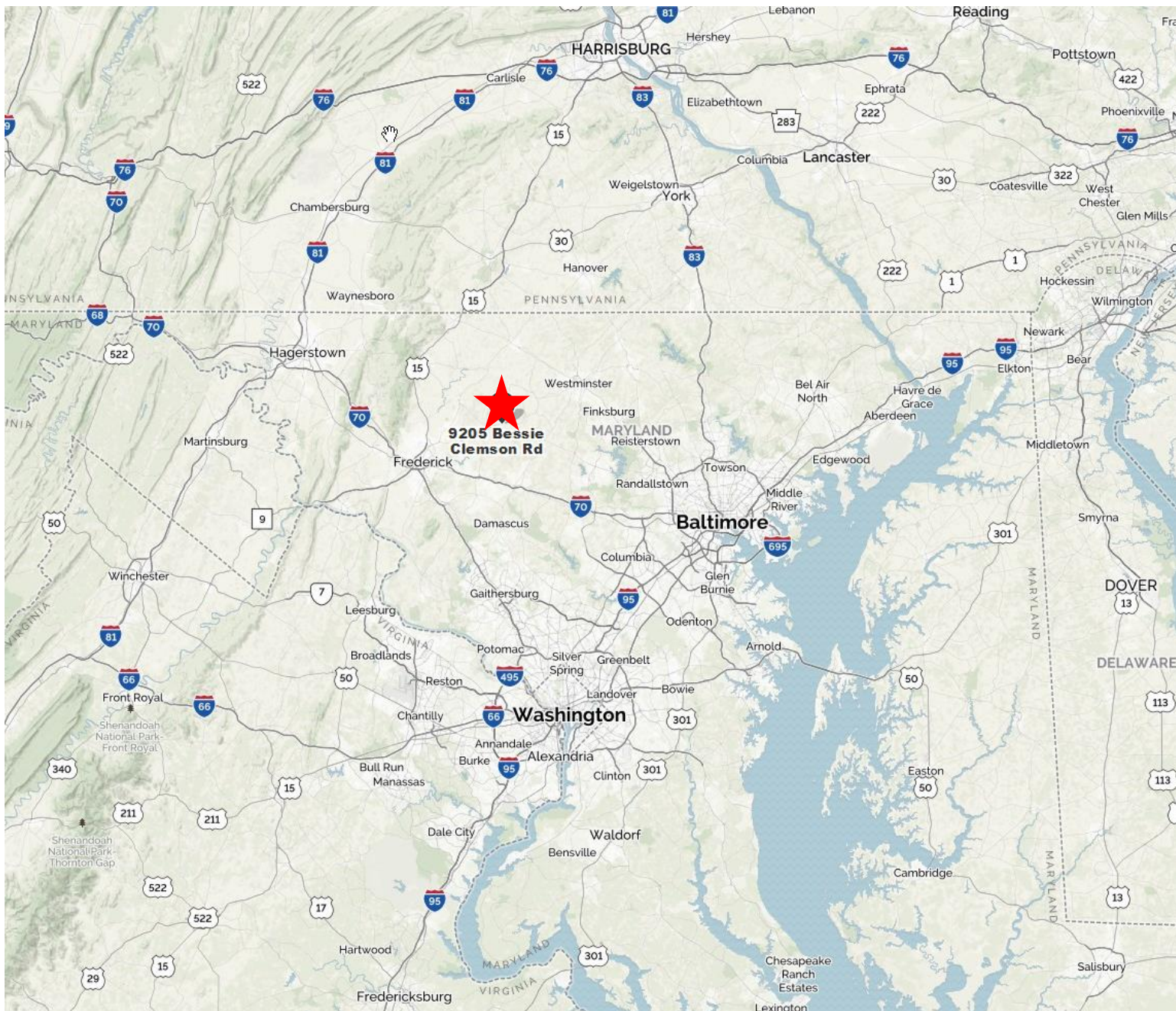
Hampton Inn & Suites, Frederick, MD – 301-696-1565

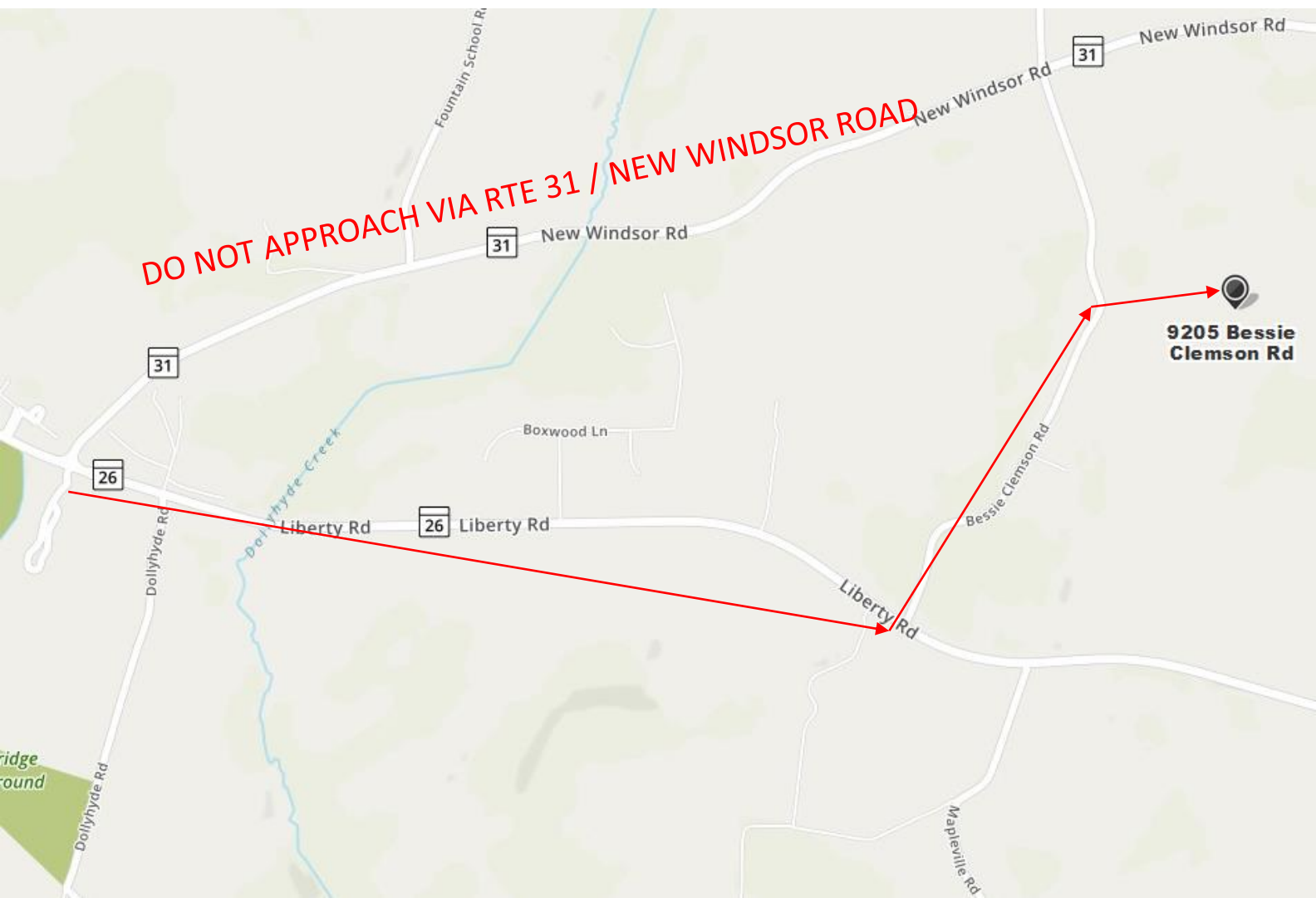
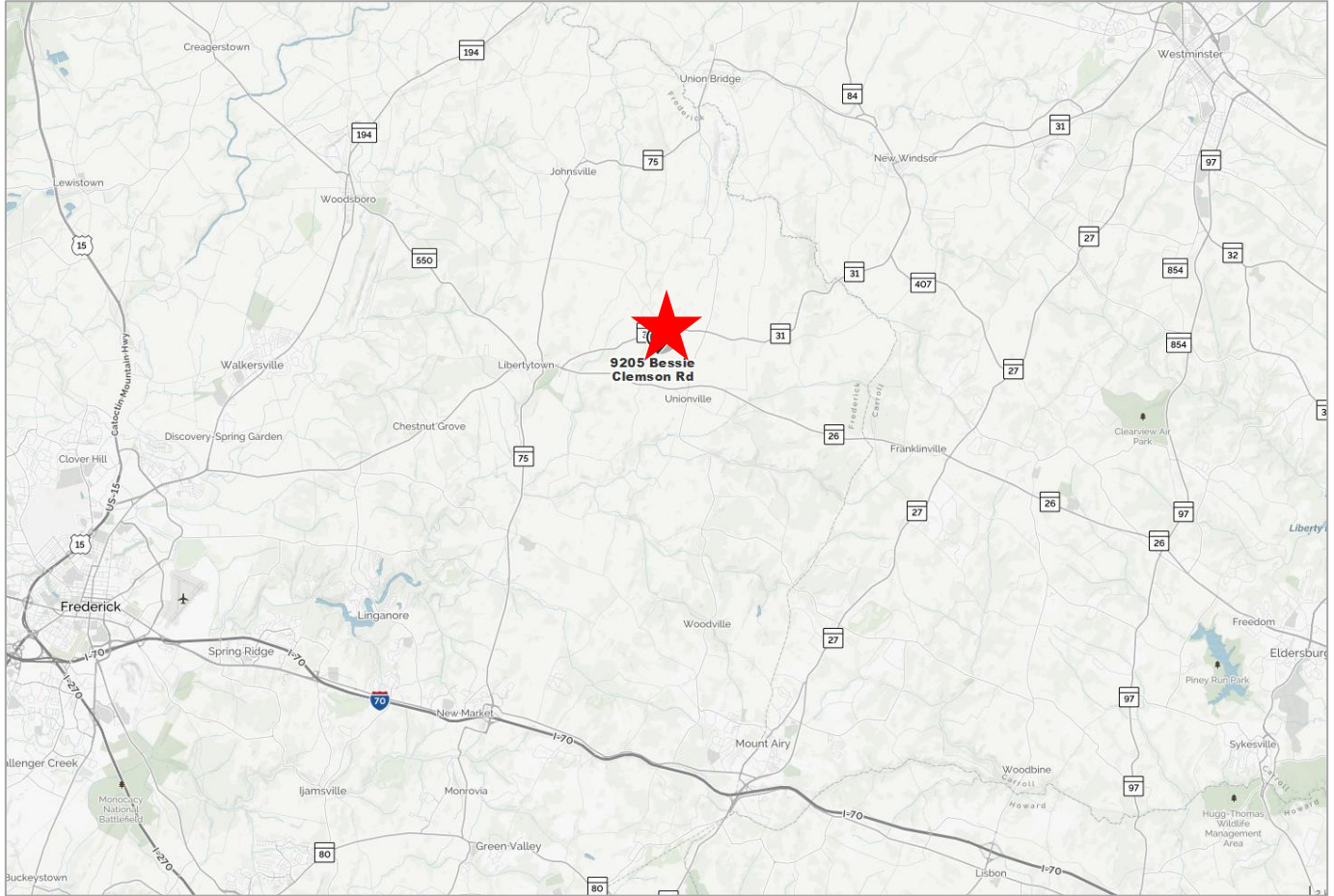
Travelodge, Frederick, MD – 301-663-0500

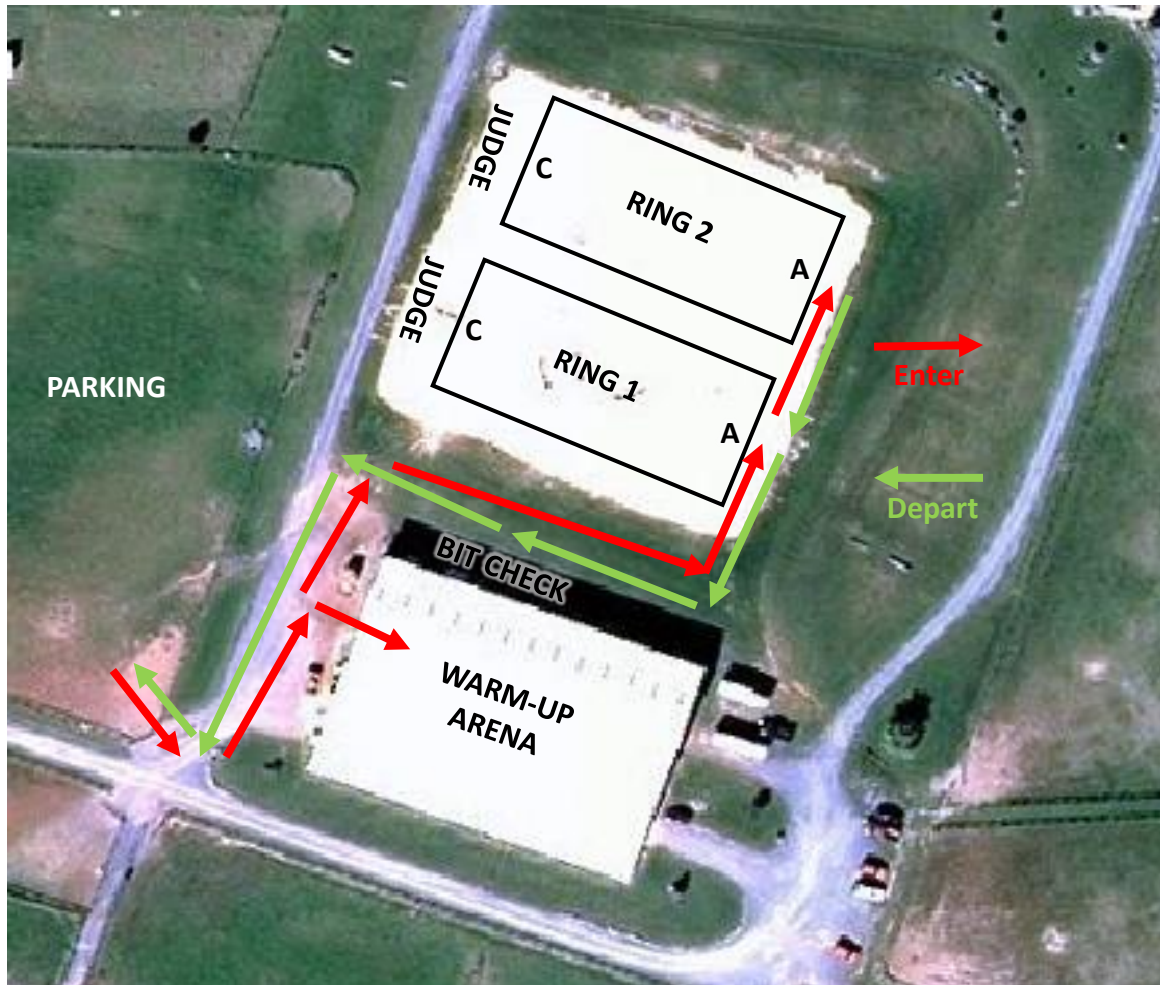
Days Inn, Frederick, MD – 301-694-6600

21. DIRECTIONS AND MAPS

- **From the Washington Beltway:** Take I-270 North for 25.8 miles. Take the MD-109 exit, exit 22, toward Hyattsville/Barnestown, travel 0.2 mi. Keep to the left to take the ramp toward Hyattstown, travel 0.03 mi. Turn left onto Frederick Road / MD-355, travel 0.6 mi. Take first right onto MD-75 / Green Valley Road, travel 4.8 mi. Turn left onto Fingerboard Road / MD-75 / MD-80, travel 0.1 mi. Take the first right onto Green Valley Road / MD-75, travel 2.3 mi. Turn right onto Green Valley Road / MD-75 / MD-877, travel 0.5 mi. Turn left onto Green Valley Road / MD-75, travel 7.8 mi. Turn right onto Liberty Road / MD-26, travel 1.8 mi. Turn left onto Bessie Clemson Road, travel 0.6 mi. By Chance Farm is on the right.
- **From the Baltimore Beltway:** Take I-70 west for 18.7 miles. Take the MD-94 exit, exit 73, toward Woodbine/Lisbon, travel 0.4 mi. Keep right to take the ramp toward Woodbine, travel 0.05 mi. Merge onto Woodbine Road, travel 7.4 mi. Turn left onto W Liberty Road / MD-26, travel 8.6 mi. Turn right onto Bessie Clemson Road, travel 0.6 mi. By Chance Farm is on the right.
- **From I-70 West:** From I-70 traveling east, take the MD-75 / Green Valley Road exit, travel 6.8 mi. . Turn right onto Liberty Road / MD-26, travel 1.8 mi. Turn left onto Bessie Clemson Road, travel 0.6 mi. By Chance Farm is on the right.
- **Do not enter Bessie Clemson Road from Route 31 / New Windsor Road as the turn into show parking is too sharp.**
- See maps on this and the following page.









- **USEF Rules and Specifications:**

Every class offered herein that is covered by the rules and specifications of the current USEF Rule Book (<https://www.usef.org/compete/resources-forms/rules-regulations/rulebook>) will be conducted and judged in accordance therewith.

- **GR1301 – Motor Vehicle Statement:**

7. Minors who do not have a valid driver's license which allows them to operate a motorized vehicle in the state in which they reside will not be permitted to operate a motorized vehicle of any kind, including, but not limited to, golf carts, motorcycles, scooters, or farm utility vehicles, on the competition grounds of licensed competitions. Minors who have a valid temporary license may operate the above described motorized vehicles as long as they are accompanied by an adult with a valid driver's license. The parent/legal guardian or individual who signs the entry blank as a parent or guardian of a minor operating a motorized vehicle in violation of this rule are solely responsible for any damages, claims, losses or actions resulting from that operation. Violations of this rule will be cause for penalties against those responsible for the child committing the offense. Wheelchairs and other mobility assistance devices for individuals with disabilities are exempt from this rule.
8. The unsafe use of personal electronic transport devices, as determined by the competition officials and management in their sole discretion, that do not require a driver's license to operate, including but not limited to Segways, hover boards, and single wheeled scooters is prohibited on competition grounds. Operating such devices in areas where people gather may be deemed "unsafe use" if there is a risk of harm to others. If the operator of the device is a minor, the parent/legal guardian or individual who signs the entry blank as a parent or guardian of a minor operating the device in violation of this rule is accountable and may be subject to penalties. Wheelchairs and other mobility assistance devices for individuals with disabilities are exempt from this rule.

- **USEF Membership Statement:**

Life, senior active and junior active members shall be eligible to participate in all classes at Regular Competitions, Eventing Competitions at the Modified Level or above and Combined Driving Competitions at the Advanced Level, Dressage, Reining and Vaulting Competitions and Endurance Rides. A nonmember may participate as a handler, rider, driver, owner, lessee, agent, coach or trainer at Regular Competitions, Eventing Competitions, Dressage Competitions, Reining Competitions and Combined Driving Competitions upon payment of a \$45 Show Pass fee. Participants in the following classes are exempted from the Requirements of this rule: 1) leadline; 2) exhibitions; 3) games and races; 4) classes for 4-H members; 5) walk trot (exception: Friesian performance FR222) and academy classes (academy classes are classes limited to horses used regularly in a lesson program); 6) USDF introductory level tests, pas de deux and quadrille classes; 7) NRHA Endorsed Reining Competitions. 8) Opportunity classes, 9) citizens of other nations who have proof, in English, of current membership in good standing of their own National Federation, 10) USEA beginner novice division; and 11) assistant handlers in Dressage Sport Horse Breeding classes.

- **USEF Rules and Regulations:**

- **EVERY CLASS OFFERED HEREIN WHICH IS COVERED BY THE RULES AND SPECIFICATIONS OF THE CURRENT USEF RULE BOOK WILL BE CONDUCTED AND JUDGED IN ACCORDANCE THEREWITH.**
- All questions not covered in these rules and regulations shall be decided by the show management whose decision shall be final.
- Every horse entered for competition will comply with the rules of the horse show management, but management will, in no case, be responsible for any loss or damage that may occur, and it shall be condition of entry that each exhibitor shall hold this horse show and the officials and employees of the show blameless for any loss or accident to his horse, employees, equipment, which may occur from sickness, fire or otherwise.
- The management reserves the right to refuse, accept conditionally, or to cancel any entries, disqualify any riders or exhibitors, prohibit entries and cancel award prizes without claims for damages; to cancel or combine unfilled classes, or to reschedule classes after due notice to exhibitors; to change rings or rotate judges.
- Exhibitors are notified that any act of discourtesy or disobedience to the judges or officials, on the part of the owner, manager, rider, or groom shall disqualify the horse, and the owner shall forfeit his entry fee and other fees.
- Show management reserves to itself the power to prohibit any person from attending or showing a horse in the ring and to remove any groom or horse from the show without being liable for compensation. In accordance with the 1989 Federal Waste Tracking Act, which restricts the disposal of medical waste, bio-hazardous medical waste containers will be provided in the stable area. All exhibitors and their agents are responsible for the proper disposal of this waste.
- No person will be allowed in the show ring during the time of judging except the exhibitor and those having official or requested duties to perform.
- It is the tradition of the show that riders be correctly attired for the class in question, that attendants be neatly dressed and the horses properly presented. Management may in its discretion bar any person from entering the ring if not suitable presented to appear before an audience.

- **SafeSport:**

Reminder: All USEF Life and Senior Active members, as well as participants who have regular contact with minor athletes, are required to comply with the U.S. Center for SafeSport training requirement to be eligible to participate in the competition. All participants must adhere to the U.S. Center for SafeSport Code, USEF Safe Sport Policy, and the Minor Athlete Abuse Prevention Policies. More information about these can be found at www.usef.org.

- **USEF Sharps Containers Rule (GR1210.4):**

Competition management shall place a minimum of one sharps container per each competition, whether or not stabling is provided. Additionally, at least one sharps container per fifty occupied stalls for the disposal of needles and other disposable sharp instruments in convenient locations in barns housing competition horses. It is competition management's responsibility to replace such containers when full and dispose of them properly. Competition management may fine any individuals including trainers, owners, exhibitors, or their agents up to \$100 for improper disposal of needles or other sharp disposable instruments. Competition management will place a notice of this requirement either in its prize list or on a specific handout given to trainers on check in at the competition. If local law has different requirements, local law will prevail. Competitions failing to comply with placing the required number of containers on the show grounds will be considered in violation of the rules and may be subject to penalty as determined by the CEO or his designee and/or the Hearing Committee.



MAAP

MINOR ATHLETE ABUSE PREVENTION

LEARN ABOUT MAAP POLICIES



SafeSport Training



One-On-One Interactions



Local Travel



Social Media and
Electronic Communications



Read about these and more at
usef.org/MAAPP

REPORT MAAP POLICY VIOLATIONS



usef.org/safe-sport/reporting
859-225-6915



USDF Membership Benefits: USDF is dedicated to education, the recognition of achievement, and promotion of dressage. For details on member benefits, including educational programs, awards, and other opportunities, refer to the *USDF Member Guide* or the USDF website at www.usdf.org.

This
competition
is recognized
by USDF
for 2022



Membership Requirements for USEF-licensed/USDF-recognized Competitions: Owners and riders, including foreign riders and owners who are not residents of the US, wishing to participate in a USEF-licensed/USDF-recognized competition as a rider or owner/lessee, must have either a USDF Group Membership (GM), Participating Membership (PM), or have a USDF Non-Member (NM) identification number and pay the USDF Non-Member (NM) fee. (Note: USDF Business Members can own horses but cannot compete as riders with their USDF Business Membership.)

Horses competing at USEF-licensed/USDF-recognized competitions must have either a USDF Horse Identification (HID) number or a USDF Lifetime Horse Registration (LHR). Proper credentials or verification certificates must be presented to the competition secretary.

Riders and owners wishing to participate in a USEF-licensed/USDF-recognized competition, and not able to present the competition secretary with verification of a USDF membership or NM identification, and USDF LHR or USDF HID, must complete a USDF Competition Affidavit Form and pay the \$5 affidavit filing fee. A copy of a completed affidavit form from another competition may also be used for verification purposes for up to 60 days. (Exception: Affidavits cannot be used at Great American Insurance Group/USDF Regional Dressage Championships.)

Exceptions:

- Horses competing only in Individual Breed Classes (IBCs) at DSHB competitions, sires and dams of horses in DSHB group classes, where those sires or dams are not actually competing in the same competition, horses competing only in breed restricted dressage or DSHB classes at Regular Competitions (e.g. all Arabian, all Friesian, or all Morgan classes), or in USDF Introductory Level tests, pas de deux or quadrille, are exempt from this requirement. Also exempt are horses ridden in leadline, exhibitions, games and races, classes for 4-H members, walk-trot, academy, and opportunity classes.
- Riders and owners/lessees competing only in classes which are exempt from the USDF HID requirements are also exempt from the USDF NM identification number and NM fee requirements. Also exempt are handlers of horses competing in DSHB In-Hand or Group classes.

Memberships Defined

Participating Membership (PM): A membership issued to an individual directly by USDF. The membership year is December 1 through November 30. PMs are available for 1-year (\$90), 5-years (\$360), or life (\$1,800). A USDF Youth Participating Membership (YPM) is available for individuals who have not reached their 21st birthday by December 1 of the current membership year (\$72). A PM allows the member to compete at USEF-licensed/USDF-recognized competitions and to participate as a rider and/or owner/lessee for all Adequan®/USDF Year-End Awards and the Great American Insurance Group/USDF Regional Dressage Championship program.

Group Membership (GM): A membership issued to an individual by USDF when the member name and dues are submitted to USDF through an affiliate Group Member Organization (GMO). The GM year begins December 1 and ends November 30. A GM allows the member to compete at USEF-licensed/USDF-recognized competitions and participate in the USDF Rider Awards Program and the USDF Regional Schooling Show Awards Program.

Business Membership (BM): A membership that runs December 1 through November 30 and is issued to a business or organization directly by USDF. The USDF BM (\$240) offers a wider variety of advertising benefits. BMs satisfy requirements of horse ownership only.

Non-Member (NM) Identification Number: For each USDF NM owner/lessee and USDF NM rider there will be a USDF NM fee of \$35 per competition that must be collected by the show secretary and submitted to USDF, along with the USDF Report of Fees document and the \$5 affidavit fee and Competition Affidavit Form if the person cannot provide a copy of their USDF NM card. Owners/lessees or riders exempt from the NM number requirements are also exempt from paying the USDF NM fee. If there are multiple owners of a horse and all are NMs, only one of the owners must pay the NM fee. If the horse has at least one owner who is a current USDF PM, GM, or BM there is no NM fee assessed. Competition management will be invoiced for all applicable USDF NM fees not received with the USDF post-competition paperwork, along with a report listing all USDF NMs. Competition management is then required to submit the NM fees within 30 days to the USDF. An individual with a USDF NM identification number is not eligible for any USDF membership benefits. Once a USDF NM number has been assigned, a USDF NM card can be obtained from the USDF website.

Horse Identification (HID) Number: A one-time tracking number for horses (\$35). Scores earned by a horse with an HID number will be recorded, but will NOT be counted towards Adequan®/USDF Year-End Awards. A horse with an HID number is not eligible to compete in Great American Insurance Group/USDF Regional qualifying or championship classes. An HID number can be upgraded to a Lifetime Horse Registration (LHR) for a fee of \$80. If a horse has a USDF LHR it does not need an HID number. An HID number is a one-time fee that does not need to be renewed.

Lifetime Horse Registration (LHR): A horse with an LHR (\$115) is eligible for Adequan®/USDF Year-End Awards, and eligible to compete in Great American Insurance Group/USDF Regional qualifying and championship classes, assuming requirements for the owner and rider are met. If a horse has an LHR it does not need an HID number. An LHR does not need to be renewed.

How to Join USDF

Applications for USDF Participating Membership (PM), Business Membership (BM), Horse Identification (HID) number, and Lifetime Horse Registration (LHR) may be found in the following locations:

- On the USDF website: www.usdf.org. You can submit the application online or download the form and fax or mail it to the USDF office.
- In the show office at USEF-licensed/USDF-recognized competitions classified by USEF as Dressage Competitions, and Regular Competitions which are open to all breeds.
- By calling or writing the USDF office at (859) 971-2277, 4051 Iron Works Parkway, Lexington, KY 40511

The effective date of membership is the date the form and correct fees are received in the USDF office or, if applying at a competition, the date accepted by the competition secretary, provided the application is signed and dated by the competition secretary, member, and/or horse owner on that same day.

USDF Statement on Animal Welfare

The United States Dressage Federation, Inc. (USDF), a federation of individual members and over 100 independent organizations throughout the United States, supports the concept of ethical treatment of animals.

Dressage is a classical method of training horses, based upon the horse's natural responses, as carried out in a gradual, planned program during which the horse's athletic abilities are improved in a systematic manner. As a result, the horse becomes capable, comfortable, and responsive in partnership with the rider without the use of force. Dressage competition at various levels of achievement is the ultimate test of the training program to determine whether the desired harmony between horse and rider has been achieved.

The rules pertaining to dressage competition prohibit the use of artificial appliances, training aids, and drugs, which would force the horse to submit. Instead, the emphasis is upon training and a cooperative partnership with the rider. Major competitions are carefully monitored to assure that there is no unnecessary force or harshness displayed.

Unlike other horse sports in which horses enter training at a relatively immature state, dressage training is usually not seriously begun until the horse is three or four. The top levels of achievement require five or more years of progressive training and it is not unusual to see horses in international competition in their late teens. This, in itself, places a premium on good care and soundness throughout the horse's life.

While supporting the concept of animal welfare in its broadest form, the United States Dressage Federation, Inc., also recognizes that it is unrealistic to ascribe human emotions and responses to the horse which in its wild state is a creature of flight, living a hard and precarious existence. Under domestication, the horse is assured of ample food, water, and shelter, as well as protection against infectious diseases and damaging parasites, thus leading a longer and healthier life with a high rate of survival.

As an educational organization, USDF has numerous programs, which teach people how to pursue the accepted, humane training methods. A program of certifying instructors also emphasizes protecting the horse's welfare in pursuit of dressage training.

United States Dressage Federation
4051 Iron Works Parkway, Lexington, KY 40511
Phone: 859-971-2277, Fax: 859-971-7722, usdressage@usdf.org, www.usdf.org

ATTENTION COMPETITORS

Each competitor is responsible for supplying management with correct applicable numbers (USDF and USEF) for horse, owner, rider, and trainer, before the day(s) of the competition.

The scores of competitors who fail to supply correct numbers may not be counted toward national awards.

ATTENTION FREESTYLE COMPETITORS



UNITED STATES DRESSAGE FEDERATION™ Freestyle Competitor Reminders

- Submit two CDs of your music clearly labeled with your name, horse's name, bridle number, and freestyle level.
- Be present for your sound check.
- Know the rules for the level you are riding. This includes forbidden and allowed movements for your level.

Questions?
Contact freestyle@usdf.org



2022 Great American Insurance Group/USDF Regional Dressage Championships

A single Regional Dressage Championship program organized by the United States Dressage Federation (USDF), and recognized by the United States Equestrian Federation, Inc. (USEF), will be held in each of the nine USDF regions. In addition, Alaska and Hawaii may each hold state championships if an official request from a Group Member Organization (GMO) is received by April 1 of the prior year. The Regional Championship Program Rules can be found on the USDF website at www.usdf.org. Please refer to the 2022 USDF Member Guide for the comprehensive list of rules and requirements for this program.

Membership/Registration Requirements for Qualifying and Championships

All memberships and registrations/recordings must be correct and current at the time qualifying scores are earned and at the time of the championships.

Rider:

- Must have a USDF Participating* Membership (PM).
- Must have a USEF membership (Active or Life).

Horse:

- Must have a USDF Lifetime Horse Registration (LHR).
- Must have a USEF (Annual or Lifetime) Horse Recording.
- USDF horse registration and USEF horse recording must be in the name(s) of the current owner(s) or lessee(s). A horse is not required to have breed registry papers.

Owner:

- Must have a USDF Participating or Business Membership and a USEF membership (Junior Active, Senior Active, Life, or Recorded Farm (with Active Farm Owner)). If the horse has more than one owner, at least one owner must have both active USEF membership and active USDF Participating or Business Membership and must be the owner of record with USEF and USDF. For a business or farm to be the valid owner under this requirement, it must be listed as an owner of the horse with both USEF and USDF.

* PMs are USDF members who join USDF directly. USDF Group Members (GM) are ineligible.

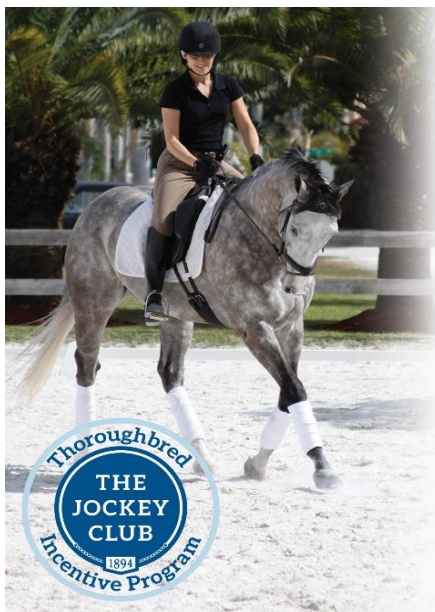
Minimum Qualifying Scores: One set of nationally-standardized qualifying scores has been established for all USEF/USDF Regional Championships, for Training Level through Grand Prix, in three divisions: open, adult amateur and junior/young rider. FEI Junior and FEI Young Rider classes have only one respective division. Freestyles have only open divisions.

The minimum percentages are as follows:

	OPEN	AA	JR/YR
Training Level (Test 3)	68%	63%	63%
First Level (Test 3)	66%	62%	62%
Second Level (Test 3)	64%	61%	61%
Third Level (Test 3)	62%	60%	60%
Fourth Level (Test 3)	62%	60%	60%
FEI Junior (Team Test)	—	—	60%
FEI Young Rider (Team Test)	—	—	60%
Prix St. Georges	62%	60%	60%
Intermediate I	62%	60%	60%
Intermediate II	62%	60%	60%
Grand Prix	60%	60%	60%
FREESTYLE	OPEN	AA	JR/YR
First Level	65%	—	—
Second Level	65%	—	—
Third Level	65%	—	—
Fourth Level	65%	—	—
Intermediate I	65%	—	—
Grand Prix	65%	—	—

Rev 1/11/2021

2022 GAIG Program Rules: [Click here](#)



Ride a **Thoroughbred**?

Provide T.I.P. Numbers
with your entries.

For more information and
to see if your Thoroughbred is eligible,
visit tjctip.com.

Show us what your Thoroughbred
can do at facebook.com/tjctip

Good luck to the
Thoroughbreds and riders!

To encourage the retraining of Thoroughbreds into other disciplines upon completion of careers in racing or breeding, the Jockey Club Thoroughbred Incentive Program (T.I.P.) is offering sponsorship for Thoroughbred-only classes and divisions and high point Thoroughbred awards. Riders/owners of eligible horses must provide T.I.P. Numbers to the event organizer with the show entry. For more information, visit www.tjctip.com.

Horse Eligibility

- For purposes of eligibility for all T.I.P. classes and awards, a "Thoroughbred" is defined as any horse that has been registered with The Jockey Club or a foreign Thoroughbred stud book approved by The Jockey Club and the International Stud Book Committee. Horse shows must enforce The Jockey Club's standards for T.I.P. eligibility. Riders and Owners must apply for a T.I.P. Number online. **Before the show**, this horse show collects the following information from T.I.P. participants to be provided to The Jockey Club upon conclusion of the horse show. It is the responsibility of the rider/owner to provide the horse show with the eligibility information:
 - Horse's registered name, show name, rider name and T.I.P. Number (shows can look up T.I.P. numbers under the "Horse Show Personnel" tab).
- If an owner or rider cannot provide the proof of eligibility as described above, the horse is not eligible for T.I.P. classes or awards.
- Sign up for an Interactive Registration (IR) account at www.registry.jockeyclub.com in order to look up pedigrees and tattoo numbers, including on mobile devices. Interactive Registration (IR) accounts are free.

Awards

The following awards have been approved for this show. The table below contains a listing of all the prizes and/or prize money associated with each show/award. The ribbons & medals associated with each award are described below.

Class/Award
Introductory Dressage OTTB High Point Award (% +1%)
Training Level Dressage OTTB High Point Award (% +3%)
First Level Dressage OTTB High Point Award (% +5%)
Second/Third/Fourth Level Dressage OTTB High Point Award
Second Level: % +5%
Third Level: % +7%
Fourth Level: % +9%
FEI Levels Dressage OTTB High Point Award (% +11%)
High Score Dressage OTTB (Overall)

How to Compete for the Awards in this Show

Submit a copy of the TIP card with the entry packet for the show (via Equestrian Entries or via email).

DRESSAGE COMPETITION ENTRY FORM

Only for Late Entries Pre-Approved by the Show Secretary

2022 First Chance @ Dressage, by Chance?

Wednesday, 27 April 2022

OPEN: Mar 16, 2022 CLOSE: Apr 16, 2022

See form instructions on next page.

HORSE NAME (same as Coggins)	BREED	GENDER <input type="checkbox"/> Stal <input type="checkbox"/> Geld <input type="checkbox"/> Mare	HEIGHT (HANDS)	COLOR
COGGINS DATE	SIRE NAME	DAM NAME	DAM SIRE NAME	
BIRTH COUNTRY	YEAR OF BIRTH	BREEDER	HORSE FOR SALE? (in program) <input type="checkbox"/> YES <input type="checkbox"/> NO	

HORSE		RIDER		OWNER		TRAINER* (see below)	
USEF #		USEF #		USEF #		USEF #	
USDF #		USDF #		USDF #			

RIDER			
FIRST NAME		LAST NAME	
STREET ADDRESS			
CITY		STATE	ZIP CODE
CELL PHONE		EMAIL ADDRESS	
CITIZENSHIP		JR/YR BIRTHDAY (MM/DD/YYYY)	
RIDER STATUS (check one)		<input type="checkbox"/> PRO <input type="checkbox"/> AA <input type="checkbox"/> JR/YR <input type="checkbox"/> USEF NM	

OWNER			
FIRST NAME		LAST NAME	
STREET ADDRESS			
CITY		STATE	ZIP CODE
CELL PHONE		EMAIL ADDRESS	
CITIZENSHIP			

TRAINER* (see definition to the right)			
FIRST NAME		LAST NAME	
STREET ADDRESS			
CITY		STATE	ZIP CODE
CELL PHONE		EMAIL ADDRESS	
PHONE DURING SHOW			

CLASSES AND FEES				
CLASS #	CLASS DESCRIPTION	TEST	QUAL Y/N	CL FEE + Q Fee
TOTAL CLASS FEES				

OTHER FEES		FEE
Office Fee - \$30 (No grounds fee!)		\$30
USEF D&M/H Fee (each non-exempt horse) - \$23		\$23
Rider USEF Non-member Fee (if not exempt) - \$45		
Owner USEF Non-member Fee (if not exempt) - \$45		
Trainer USEF Non-member Fee (if not exempt) - \$45		
Rider USDF Non-member Fee (if not exempt) - \$35		
Owner USDF Non-member Fee (if not exempt) - \$35		
Non-competing Horse - \$10 (+ Office Fee)		
Late Fee - \$50 (must get approval from show secretary)		\$50
Change Fee - \$10		
Non-Equestrian Entries Entry - \$25		\$25
Returned Check Fee - \$30		
TOTAL OTHER FEES		
TOTAL FEES DUE		

* USEF GR147 Definition of Trainer:

1. Any adult, or adults, who has/have the responsibility for the care, training, custody or performance of a horse [at the show].
2. Said person must sign the entry blank of any Licensed Competition whether said person be an owner, rider, agent and/or coach, as well as trainer.
3. Where a minor exhibitor has no trainer, a parent or guardian must sign and assume responsibility of trainer.
4. The name of the trainer must be designated as such on the entry form.

INTERPRETATION: The trainer is not necessarily the at-home horse trainer. The trainer is the **adult** person who is **responsible for the horse at the show**. It can be the rider, owner, parent, actual trainer, etc. The trainer must be present at the show

Not sure how to enter a USEF/USDF Show?Summary instructions (web page): [Click here.](#)Complete instructions (PDF file): [Click here.](#)**Not sure how to use Equestrian Entries?**

Summary instructions: Coming soon

Complete instructions (PDF file): [Click here.](#)

Only for Late Entries Pre-Approved by the Show Secretary

COMPLETING THE FORM:

1. **HORSE INFORMATION:** Complete as many of the boxes as possible. If you do not know the information, leave the box blank. Horse Name must be the same name as on Coggins, USEF Recording, and USDF Registration.
2. **RIDER/OWNER/TRAINER INFORMATION:** Complete all of the boxes.
3. **USEF AND USDF MEMBERSHIP/RECORDING/REGISTRATION NUMBERS AND TYPES:**

EXEMPT CLASSES (for this show, Rider, Owner, Trainer and Horse only participating in Introductory Level and/or Opportunity Classes): (NOTE: USEF & Drug Fee required for horses in Introductory Level classes; not required for horses only in Opportunity classes.)

 - **HORSE:** USEF Recording and USDF Registration not required but must be entered if the horse is recorded/registered. If the horse is USEF recorded and/or USDF registered, enter the number(s). If not, enter None.
 - **RIDER/OWNER/TRAINER:** USEF and USDF memberships not required but must be entered if members. If USEF and/or USDF member, enter the number(s). If not, enter None.

NON-EXEMPT CLASSES, NO GAIG QUALIFICATION REQUESTED:

 - **HORSE:** Must have, as a minimum, a USDF HID (see <https://www.usdf.org/join/horse-applications/horse-app.asp> to apply online). Enter number(s). If horse only has USDF HID, enter the USDF HID number for both USEF and USDF.
 - **RIDER/OWNER/TRAINER:** RIDER and OWNER must be USEF and USDF member(s) or pay non-member fee(s). TRAINER must be USEF member or pay USEF non-member fee. PARENT signing as owner/trainer for a minor is exempt from both memberships. Enter number (or None for parent owner/trainer signing for minor if no #).

NON-EXEMPT CLASSES, GAIG QUALIFICATION REQUESTED:

 - **HORSE:** Must have USEF Annual or Lifetime Recording and USDF Lifetime Registration (not USDF HID). Enter both numbers.
 - **RIDER/OWNER/TRAINER:** RIDER and OWNER must be USEF and USDF member(s). TRAINER must be USEF member or pay USEF non-member fee. PARENT signing as trainer for a minor is exempt from both memberships. Enter number (or None for parent trainer signing for minor if no #).
4. **CLASS FEES:** Enter complete Class # (example: 121.2-AJY), Class Description, Test, Qual Y/N, and Class Fee (with any Q fee).
5. **OTHER FEES:** Enter other fees for the entry.
6. **TOTAL FEES DUE:** Enter the total of CLASS FEES and OTHER FEES.

ENTRY CHECKLIST - WHAT TO SUBMIT VIA EMAIL FOR PRE-APPROVED LATE ENTRIES:

- ☐ 1. Completed **Entry Form** (previous page)
- ☐ 2. **USEF Federation Entry Agreement** – one form per entry with a separate signature for rider, owner/agent, trainer, coach (if applicable), and parent (if applicable) even if they are the same people. <https://www.usef.org/forms-pubs/7M4IexYMhK4/usef-entry-agreement-fillable>
- ☐ 3. **USEF Waiver and Release of Liability, Assumption of Risk and Indemnity Agreement** - each person in the entry (owner, rider, trainer, coach – if applicable, parent – if applicable) must sign a separate form. <https://www.usef.org/forms-pubs/FDs-plVXI9U/usef-waiver-release-of-liability>
- ☐ 4. Proof of Rider/Owner/Trainer **USEF/USDF memberships**, unless exempt (use www.EqVerification.org)
- ☐ 5. Proof of Rider/Owner/Trainer **Safe Sport Training**. Applies to USEF members age 18 and over. This information is located on the #4 report.
- ☐ 6. Proof of horse **USEF recording and USDF registration**, unless exempt (use www.EqVerification.org)
- ☐ 7. Copy of current **Coggins** (within 12 months of show date). Must have horse name the same as on show entry and USEF/USDF recording/registration.
- ☐ 8. **Proof of current vaccination** IAW USEF GR845
- ☐ 9. Proof of MFS qualification, if applicable.
- ☐ 10. Full **payment** (Show Secretary will provide information on how to make a late entry payment)

28. USEF RELEASE OF LIABILITY, ASSUMPTION OF RISK INDEMNITY AGREEMENT

<https://www.usef.org/forms-pubs/FDs-plvXI9U/usef-waiver-release-of-liability>



WAIVER AND RELEASE OF LIABILITY, ASSUMPTION OF RISK AND INDEMNITY AGREEMENT

NOTE: Submit ONE FORM for EACH PERSON in the entry (rider, owner, trainer, coach if applicable).

For and in consideration of United States Equestrian Federation, Inc. dba US Equestrian ("USEF") allowing me, the undersigned, to participate in any capacity (including as a rider, driver, handler, vaulter, longeur, lessee, owner, agent, coach, official, trainer or volunteer) in a USEF sanctioned, licensed or approved event or activity, including but not limited to equestrian clinics, practices, shows, competitions and related or incidental activities and _____ **USEF Event** ("USEF Event" or "USEF Events"); I, for myself, and on behalf of my spouse, children, heirs and next of kin, and any legal and personal representatives, executors, administrators, successors, and assigns, hereby agree to and make the following contractual representations pursuant to this Agreement (the "**Agreement**"):

A. RULES AND REGULATIONS: I hereby agree that I have read, understand, and agree to be bound by all applicable Federation Bylaws, rules, and policies including the USEF Safe Sport Policy and Minor Athlete Abuse Prevention Policies (MAAPP) as published at www.usef.org, as amended from time to time.

B. ACKNOWLEDGMENT OF RISK: I knowingly, willingly, and voluntarily acknowledge the inherent risks associated with the sport of equestrian and know that horseback riding and related equestrian activities are inherently dangerous, and that participation in any USEF Event involves risks and dangers including, without limitation, the potential for serious bodily injury (including broken bones, head or neck injuries), sickness and disease (including communicable diseases), trauma, pain & suffering, permanent disability, paralysis and death; loss of or damage to personal property (including my mount & equipment) arising out of the unpredictable behavior of horses; exposure to extreme conditions and circumstances; accidents involving other participants, event staff, volunteers or spectators; contact or collision with other participants and horses, natural or manmade objects; adverse weather conditions; facilities issues and premises conditions; failure of protective equipment (including helmets); inadequate safety measures; participants of varying skill levels; situations beyond the immediate control of the USEF Event organizers and competition management; and other undefined, not readily foreseeable and presently unknown risks and dangers ("**Risks**").

EQUINE ACTIVITY LIABILITY ACT WARNING:

CAUTION: HORSEBACK RIDING AND EQUINE ACTIVITIES CAN BE DANGEROUS. RIDE AT YOUR OWN RISK.

Under the laws of most States, an equine activity sponsor or equine professional is not liable for any injury to, or the death of, a participant in equine activities resulting from the inherent risks of equine activities.

C. ASSUMPTION OF RISK: I understand that the aforementioned Risks may be caused in whole or in part or result directly or indirectly from the negligence of my own actions or inactions, the actions or inactions of others participating in the USEF Events, or the negligent acts or omissions of the Released Parties defined below, and I hereby voluntarily and knowingly assume all such Risks and responsibility for any damages, liabilities, losses, or expenses that I incur as a result of my participation in any USEF Events. I also agree to be responsible for any injury or damage caused by me, my horse, my employees or contractors under my direction and control at any USEF Event.

D. WAIVER AND RELEASE OF LIABILITY, HOLD HARMLESS AND INDEMNITY: In conjunction with my participation in any USEF Event, I hereby release, waive and covenant not to sue, and further agree to indemnify, defend and hold harmless the following parties: USEF, USEF Recognized Affiliate Associations, the United States Olympic & Paralympic Committee (USOPC), USEF clubs, members, Event participants (including athletes/riders, coaches, trainers, judges/officials, and other personnel), the Event owner, licensee, and competition managers; the promoters, sponsors, or advertisers of any USEF Event; any charity or other beneficiary which may benefit from the USEF Event; the owners, managers, or lessors of any facilities or premises where a USEF Event may be held; and all directors, officers, employees, agents, contractors, and volunteers of any of the aforementioned parties (**Individually and Collectively, the "Released Parties" or "Event Organizers"**), with respect to any liability, claim(s), demand(s), cause(s) of action, damage(s), loss, or expense (including court costs and reasonable attorney fees) of any kind or nature ("**Liability**") which may arise out of, result from, or relate in any way to my participation in the USEF Events, including claims for Liability caused in whole or in part by the negligent acts or omissions of the Released Parties.

E. COMPLETE AGREEMENT AND SEVERABILITY CLAUSE: This Agreement represents the complete understanding between the parties regarding these issues and no oral representations, statements or inducements have been made apart from this Agreement. If any provision of this Agreement is held to be unlawful, void, or for any reason unenforceable, then that provision shall be deemed severable from this Agreement and shall not affect the validity and enforceability of any remaining provisions.

I HAVE CAREFULLY READ THIS DOCUMENT IN ITS ENTIRETY, UNDERSTAND ALL OF ITS TERMS AND CONDITIONS, AND KNOW IT CONTAINS AN ASSUMPTION OF RISK, RELEASE AND WAIVER FROM LIABILITY, AS WELL AS A HOLD HARMLESS AND INDEMNIFICATION OBLIGATIONS.

By signing below, I (as the participant or as the Parent/Legal Guardian of the minor identified below) hereby accept and agree to the terms and conditions of this Agreement in connection with my (or the minor's) participation in any USEF Event. If, despite this Agreement, I, or anyone on my behalf or the minor's behalf, makes a claim for Liability against any of the Released Parties, I will indemnify, defend and hold harmless each of the Released Parties from any such Liabilities as the result of such claim.

The parties agree that this agreement may be electronically signed. The parties agree that the electronic signatures appearing on this agreement are the same as handwritten signatures for the purposes of validity, enforceability, and admissibility.

☐ RIDER/DRIVER/HANDLER/VAULTER/LONGEUR ☐ OWNER ☐ TRAINER ☐ OFFICIAL ☐ STAFF ☐ VOLUNTEER ☐ COACH (IF APPLICABLE)

Signature: _____ Date: _____

Print Name: _____

Parent/Guardian Signature: (Required if Rider/Driver/Handler/Vaulter/Longeur is a minor) _____ Date: _____

Print Parent/Guardian Name: _____ Emergency Contact Phone No. _____

6.17.20

UNITED STATES EQUESTRIAN FEDERATION : 4001 WING COMMANDER WAY : LEXINGTON, KY 40511 : 859.258.2472 : FAX 859.231.6662 : USEF.ORG

Update 25 Aug 2021



FEDERATION ENTRY AGREEMENT

NOTE: Submit ONE FORM for EACH Entry, signed by the rider, owner, trainer, and coach if applicable, in each applicable section. Use of "same" not accepted. Rider or trainer may sign as agent of the owner.

By entering a Federation-licensed Competition and signing this entry blank as the Owner, Lessee, Trainer, Manager, Agent, Coach, Driver, Rider, Handler, Vaultor or Longeur and on behalf of myself and my principals, representatives, employees and agents, I agree that I am subject to the Bylaws and Rules of The United States Equestrian Federation, Inc. (the "Federation") and the local rules of _____ USEF Event _____ (Competition). I agree to be bound by the Bylaws and Rules of the Federation and of the competition. I will accept as final the decision of the Hearing Committee on any question arising under the Rules, and agree to release and hold harmless the competition, the Federation, their officials, directors and employees for any action taken under the Rules. I represent that I am eligible to enter and/or participate under the Rules, and every horse I am entering is eligible as entered. I also agree that as a condition of and in consideration of acceptance of entry, the Federation and/or the Competition may use or assign photographs, videos, audios, cable - casts, broadcasts, internet, film, new media or other likenesses of me and my horse taken during the course of the competition for the promotion, coverage or benefit of the competition, sport, or the Federation. Those likenesses shall not be used to advertise a product and they may not be used in such a way as to jeopardize amateur status. I hereby expressly and irrevocably waive and release any rights in connection with such use, including any claim to compensation, invasion of privacy, right of publicity, or to misappropriation. The construction and application of Federation rules are governed by the laws of the State of New York, and any action instituted against the Federation must be filed in New York State. See GR908.4.

BY SIGNING BELOW, I AGREE that I have read, understand, and agree to be bound by all applicable Federation Bylaws, rules, and policies including the USEF Safe Sport Policy and Minor Athlete Abuse Prevention Policies (MAAPP) as published at www.usef.org, as amended from time to time, as well as all terms and provisions of this Prize List. If I am signing and submitting this Agreement electronically, I acknowledge that my electronic signature shall have the same validity, force and effect as if I affixed my signature by my own hand.

RIDER/DRIVER/HANDLER/VAULTER/LONGEUR (mandatory)

Signature: _____

Print Name: _____

TRAINER (mandatory)

Signature: _____

Print Name: _____

OWNER/AGENT (mandatory)

Signature: _____

Print Name: _____

COACH (if applicable)

Signature: _____

Print Name: _____

Parent/Guardian Signature: (Required if Rider/Driver/Handler/Vaultor/Longeur is a minor) _____

Print Parent//Guardian Name: _____ Emergency Contact Phone No. _____

Is Rider/Driver/Vaultor a U.S. Citizen: ☐ Yes ☐ No